

CSI Program Forum – April 2011



California **Solar** Initiative

Agenda

- **Welcome & Introductions**
- **CSI Program Update - Statistics**
- **Senate Bill 585 Update – Discussion with Gil Topete, Office of Senator Christine Kehoe**
- **Non-Residential Wait List - Update**
- **Proposed CSI Program Handbook Changes Updates**
- **Q&A**
- **Lunch**
- **Low Income Update**
 - **SASH**
 - **MASH**
- **Q&A**
- **Break**
- **CSI Thermal Update**
- **CSI Thermal Q&A**
- **Closing Comments and Adjourn**

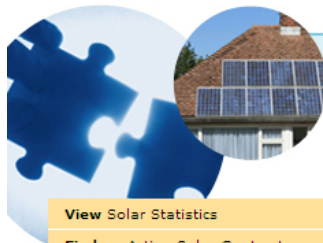


California Solar Initiative

CSI Program Statistics - Tim Treadwell, CCSE



About | Consumers | Professionals | Equipment | Resources | Solar Basics | News & Media | Contacts



Home > California Solar Statistics

California Solar Statistics

Welcome to California Solar Statistics

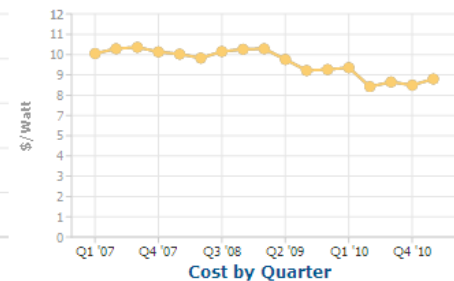
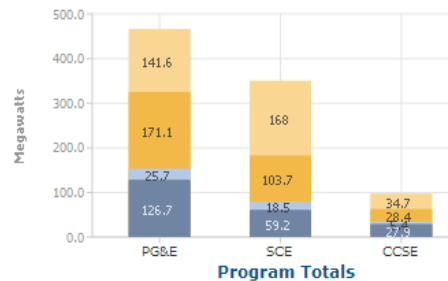
California Solar Statistics is the official public reporting site of the California Solar Initiative (CSI), presented jointly by the [CSI Program Administrators](#) and the [California Public Utilities Commission](#). This site presents actual program data, exported from the CSI online application tool each Wednesday. Users of this site can view program data summaries provided in several figures and tables, and can also download the complete Working Data Set for their own analysis.

- [View Solar Statistics](#)
- [Find an Active Solar Contractor](#)
- [Download Current CSI Data](#)
- [Search for Applications](#)
- [FAQs and Facts](#)

California Leads the Nation

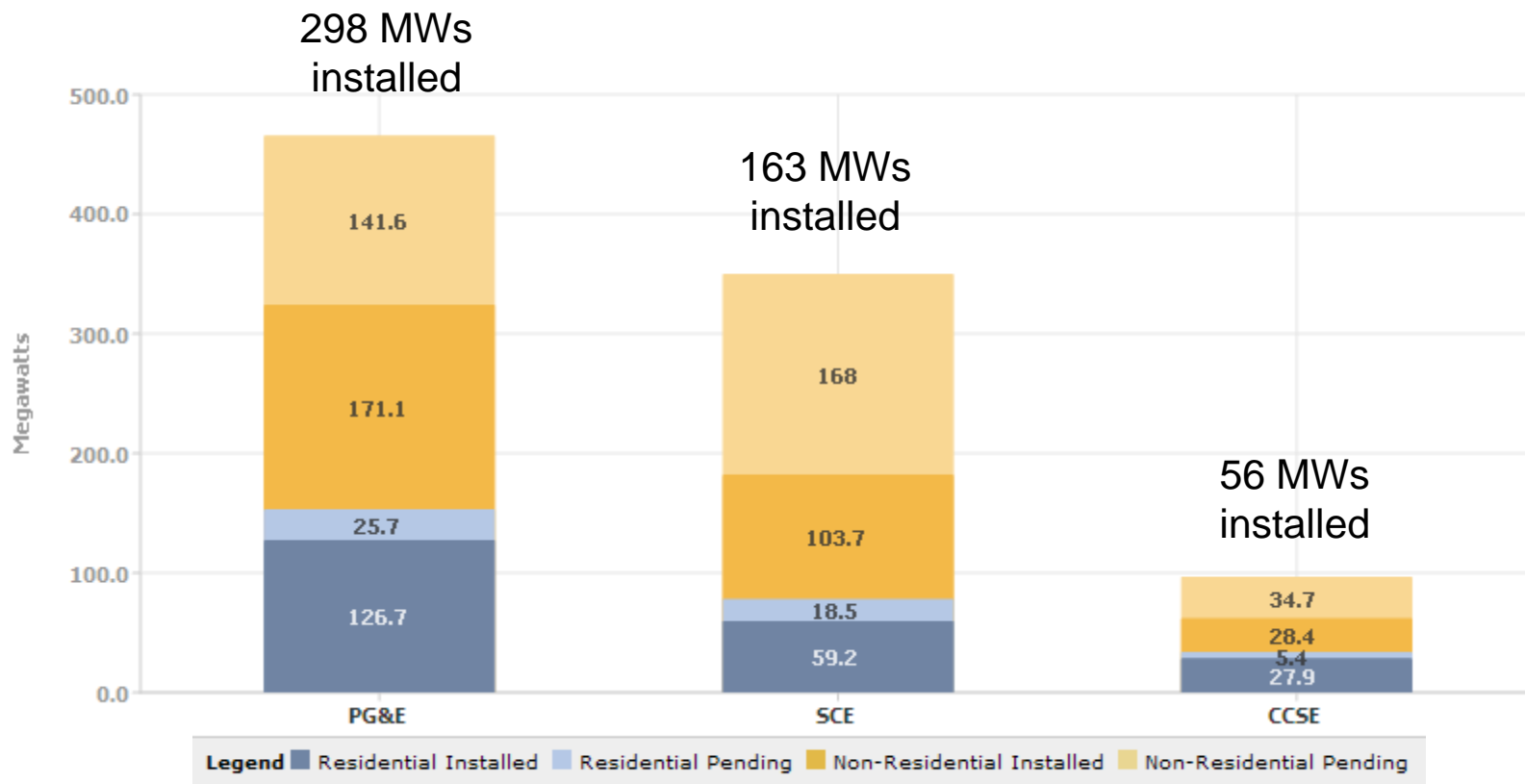
- 79,976** solar projects
- 827** megawatts installed
- \$8.56** avg cost/watt <10kW
- \$7.50** avg cost/watt >10kW

last updated: 4.13.11 [data sources](#)



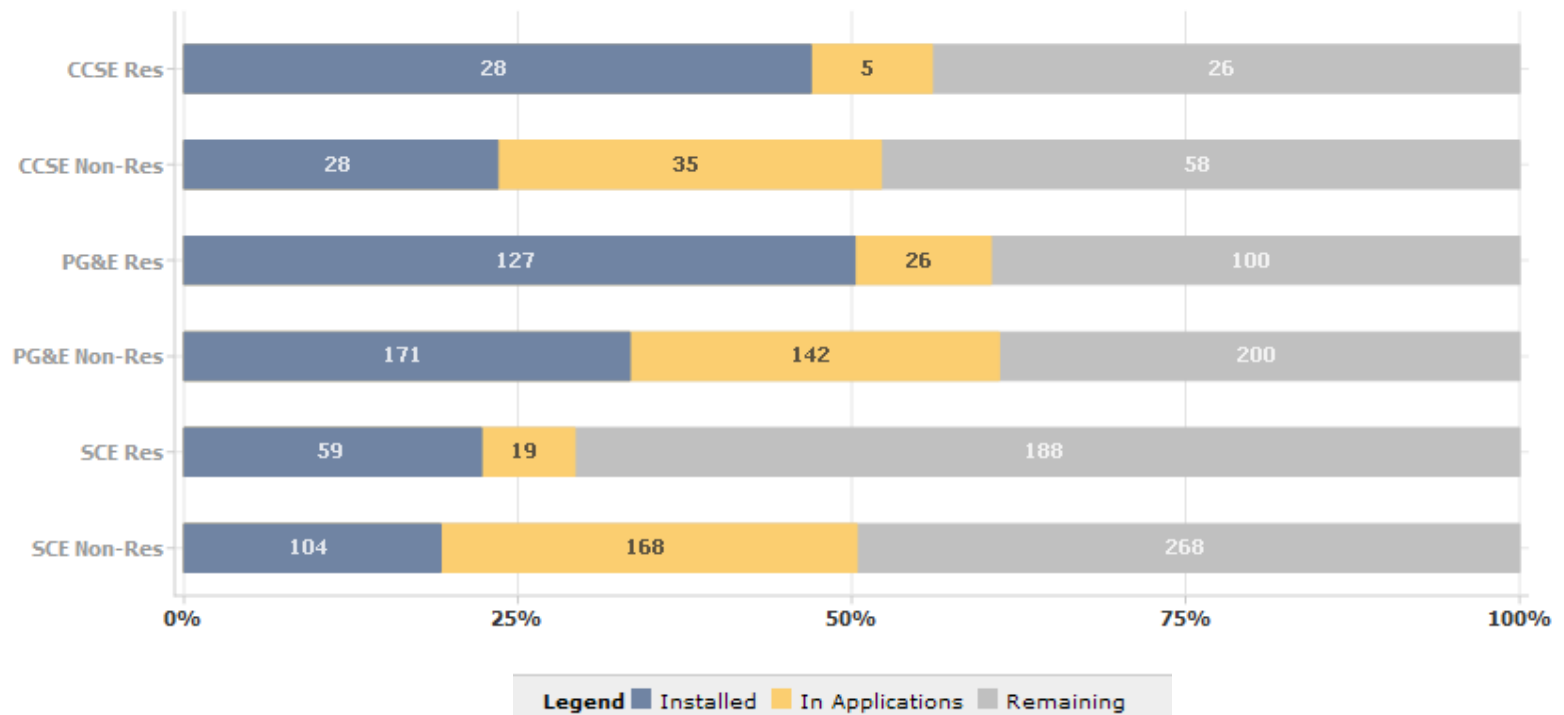
California Solar Initiative

Program Totals by Administrator



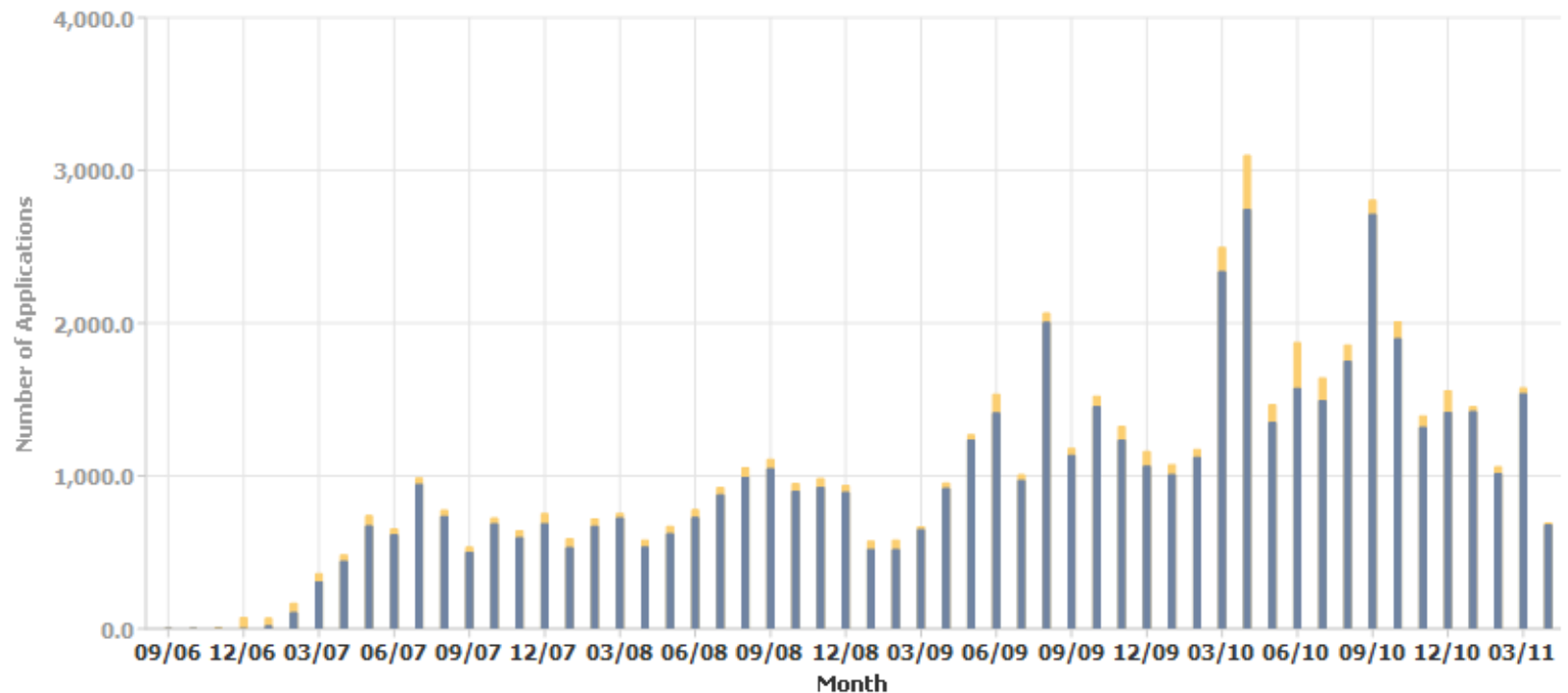
California Solar Initiative

Progress Towards Program Goal



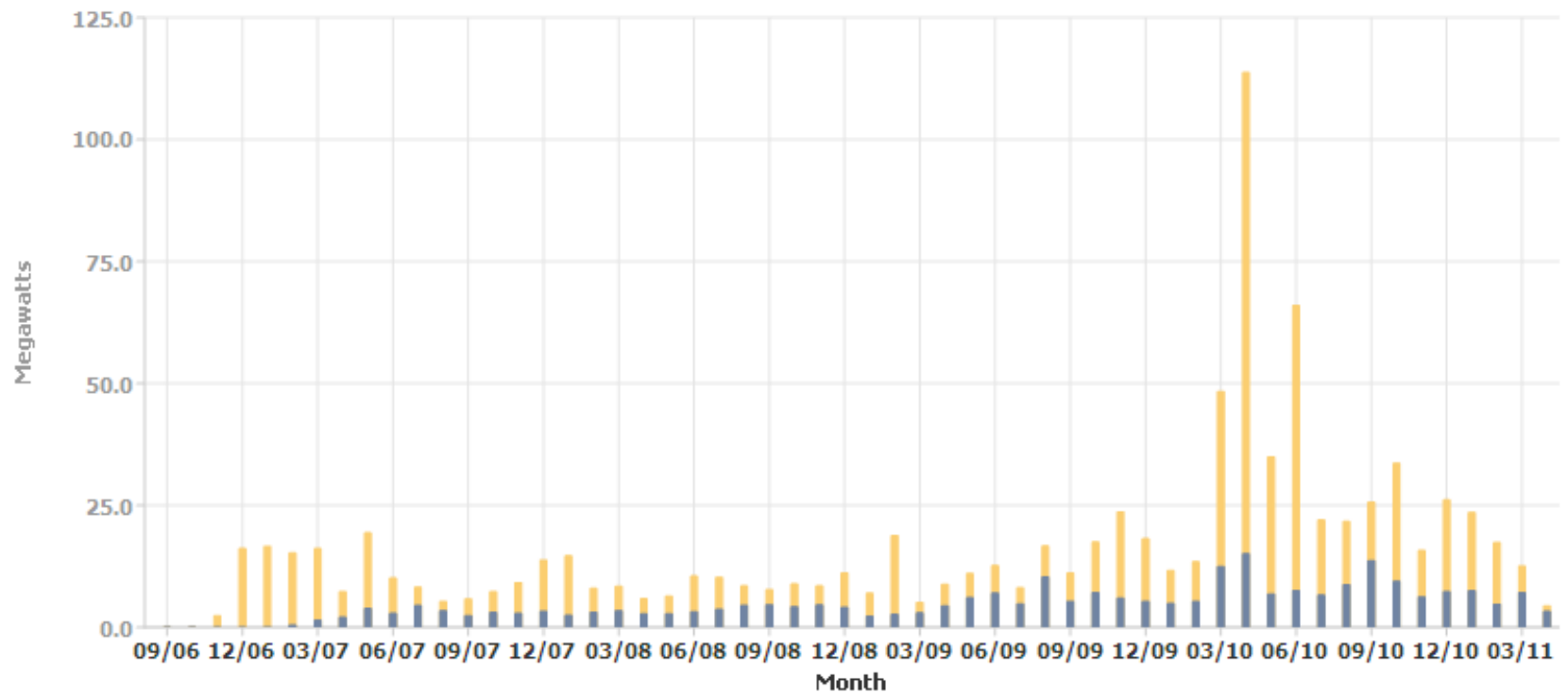
California Solar Initiative

Monthly Statistics – Since 2007



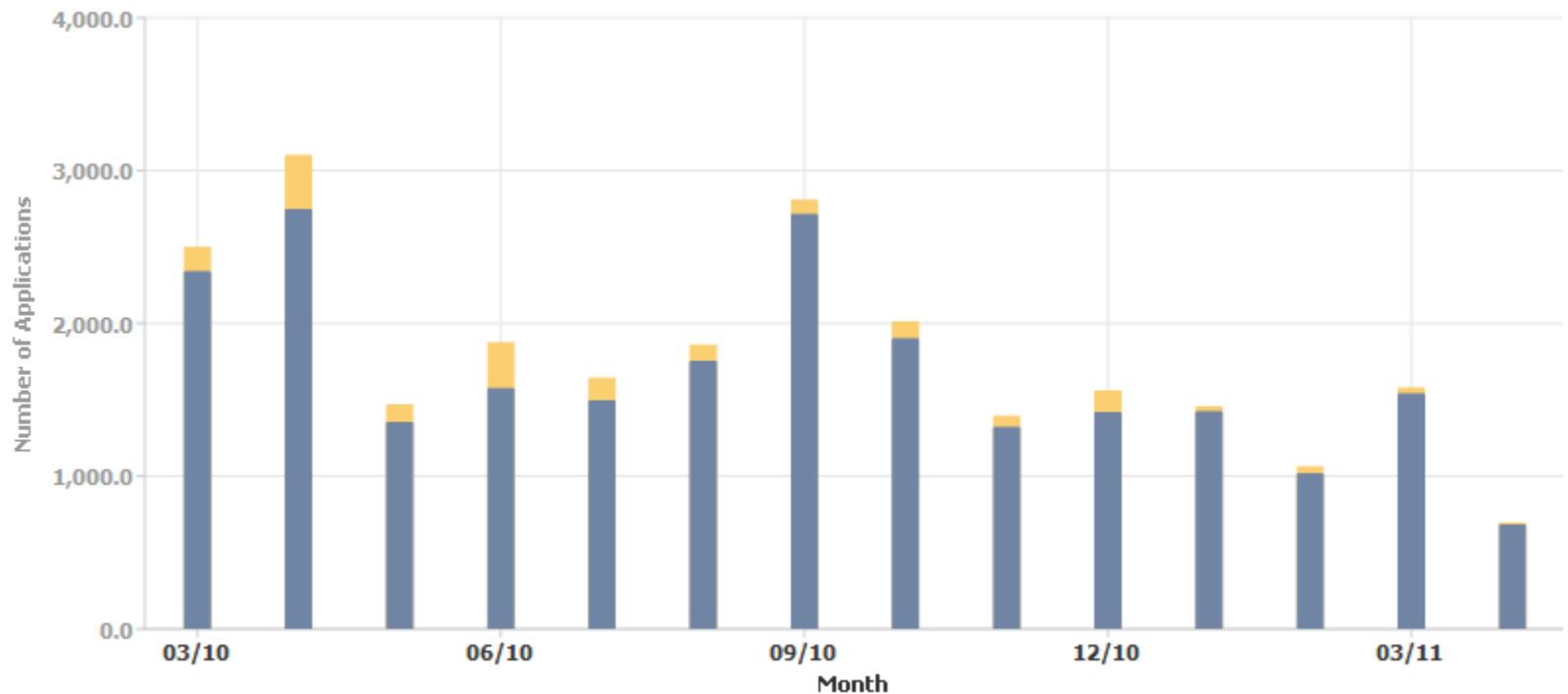
California Solar Initiative

Monthly Statistics – Since 2007



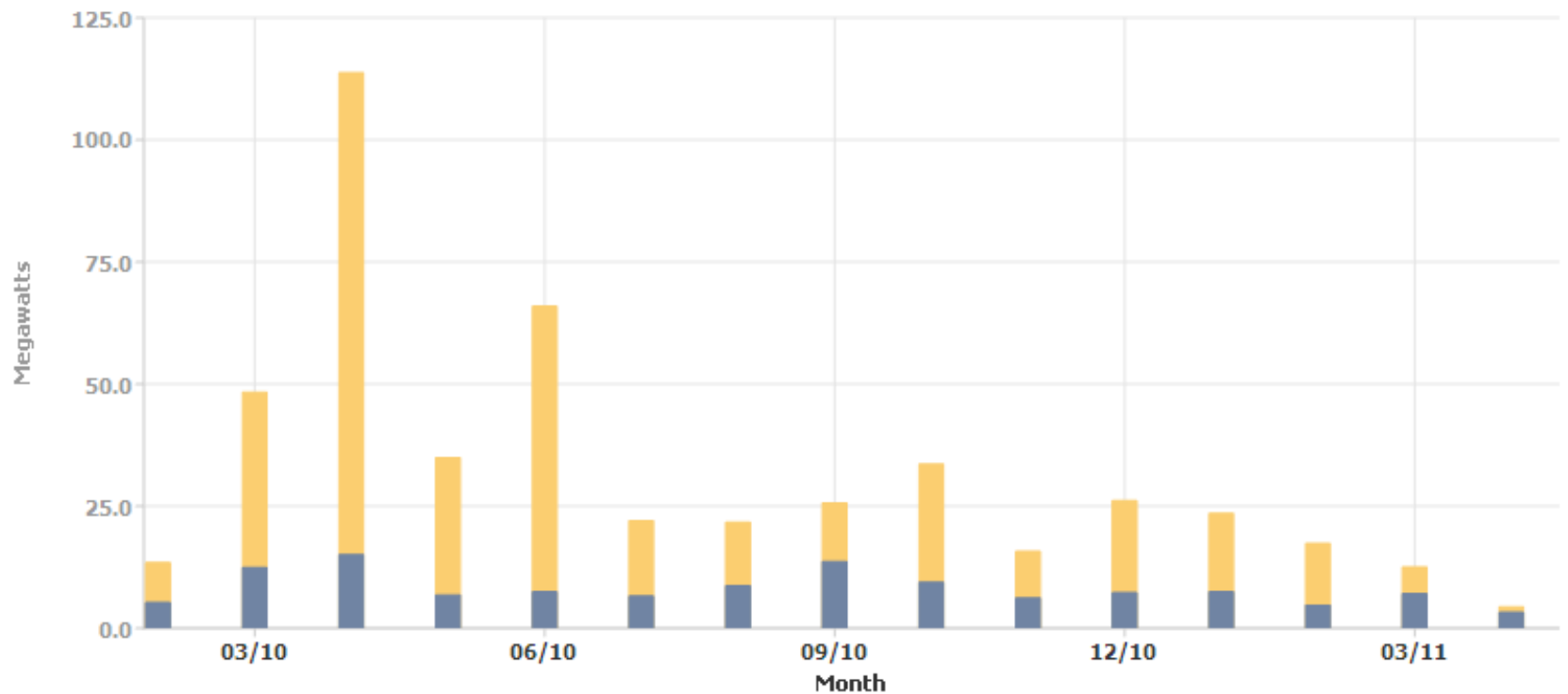
California Solar Initiative

Monthly Statistics – Since Mar-2010



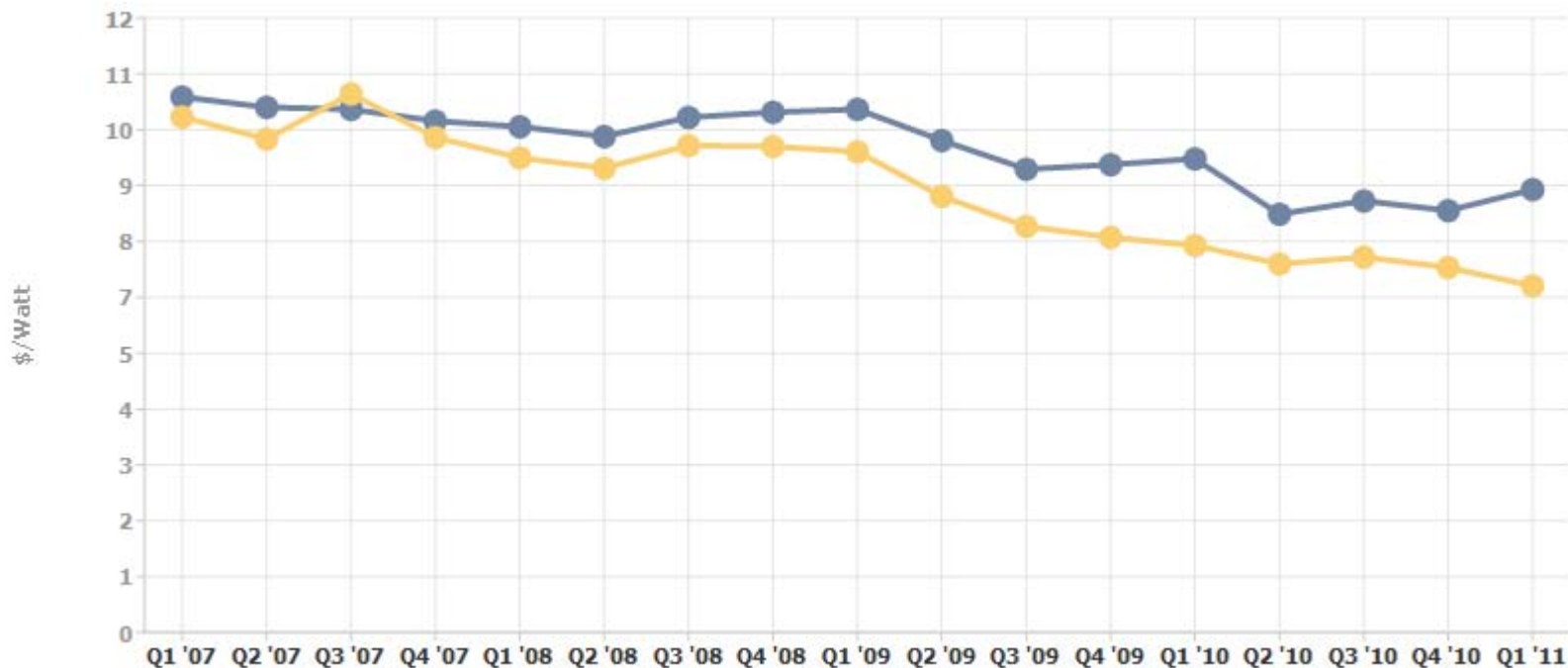
California Solar Initiative

Monthly Statistics – Since Mar-2010



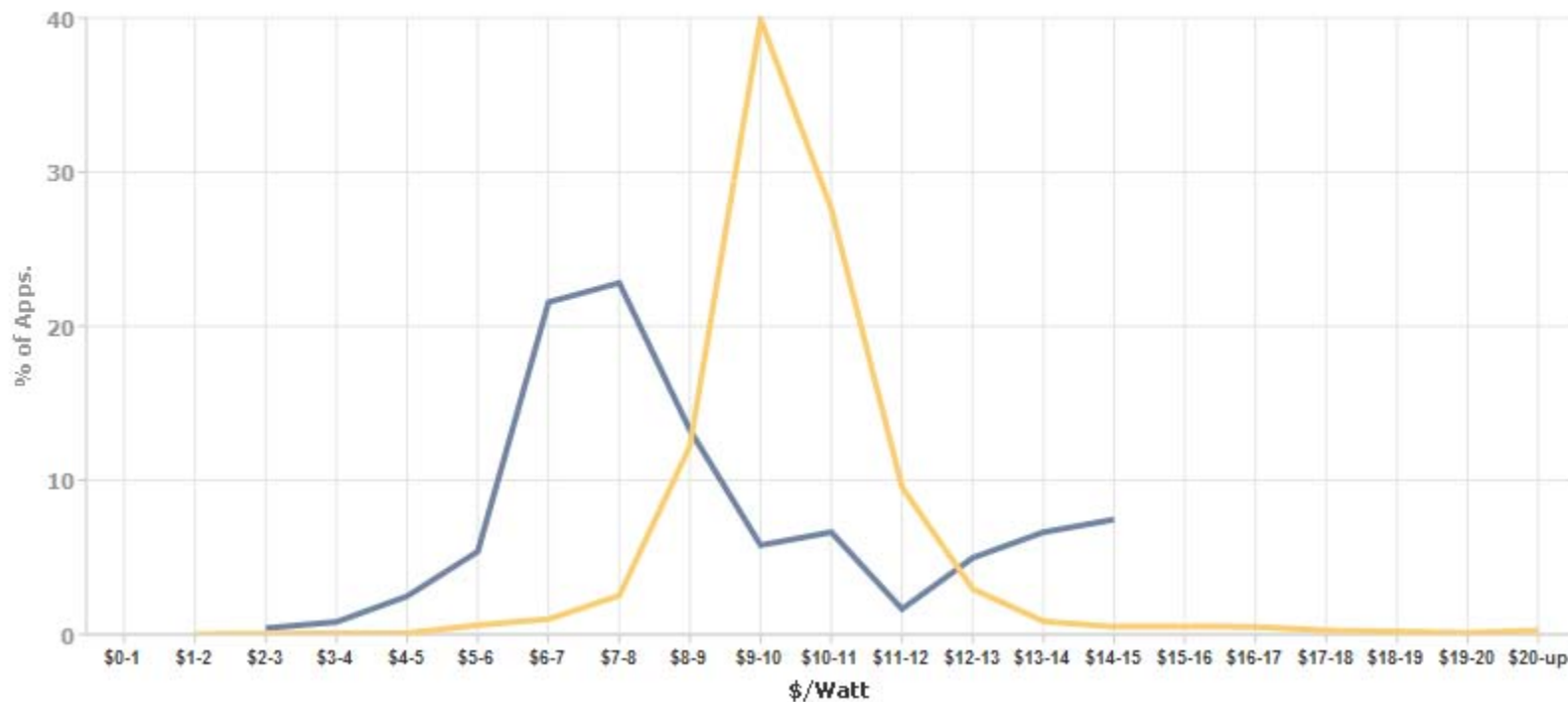
California Solar Initiative

Residential Cost Trends CPI Adjusted



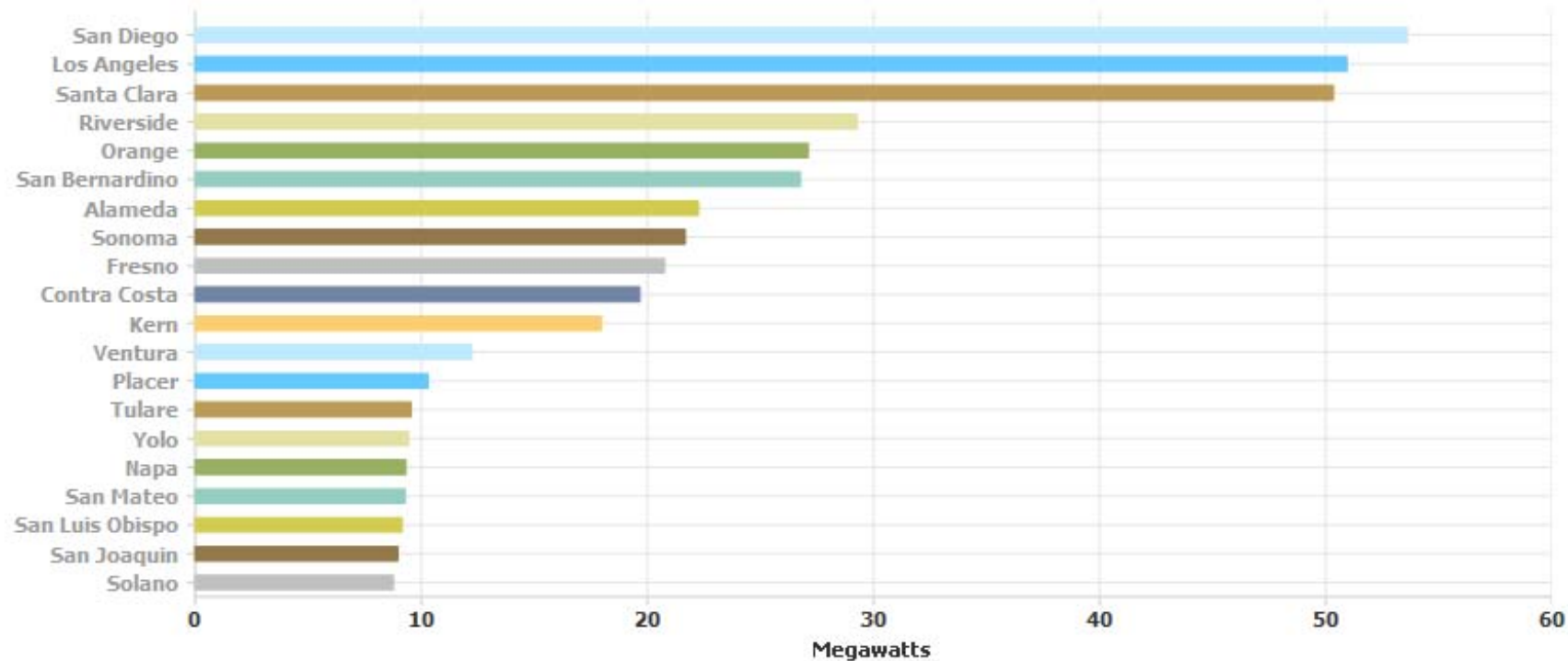
California Solar Initiative

Residential Cost Distribution CPI Adjusted



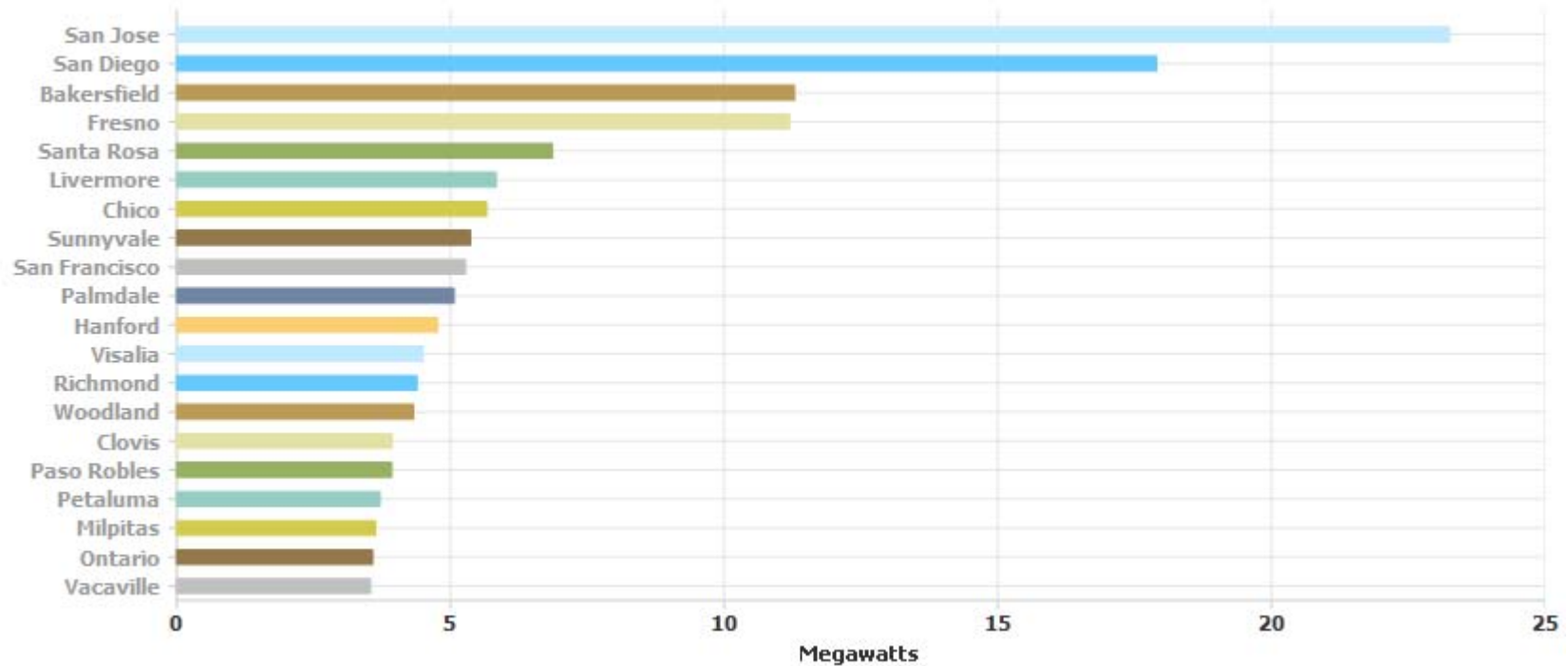
California Solar Initiative

Geographical Statistics By County



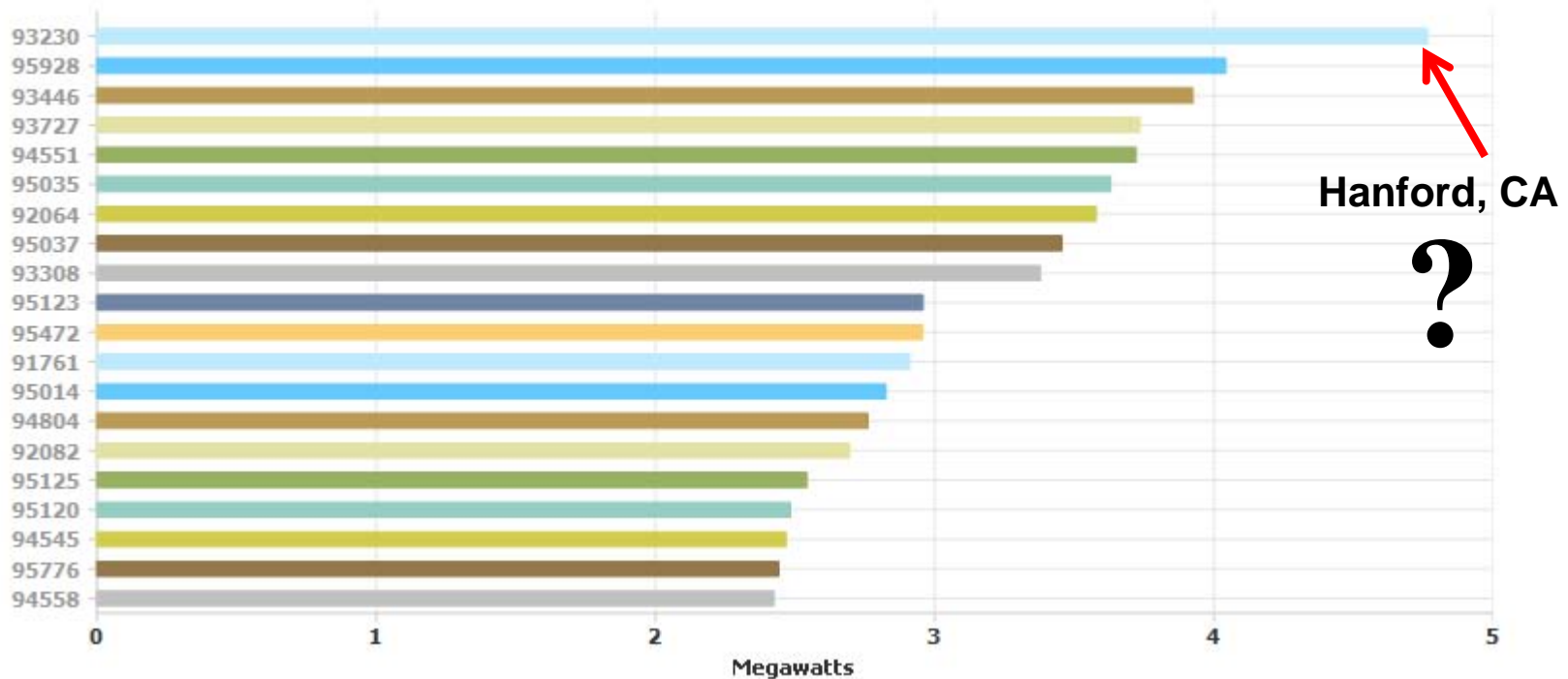
California Solar Initiative

Geographical Statistics By City



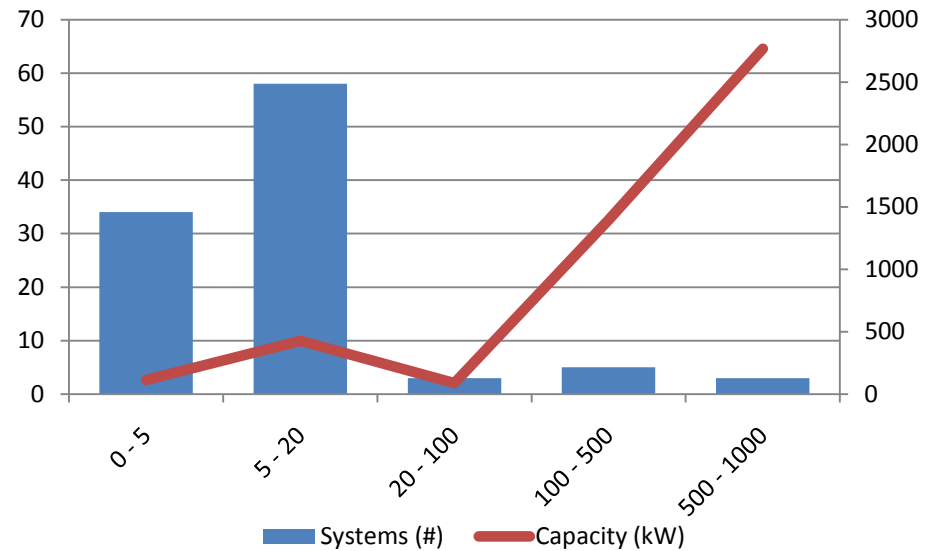
California Solar Initiative

Geographical Statistics By Zip



California Solar Initiative

Hanford, CA



California Solar Initiative

Hanford, CA

NAICS	Definition	#	kW
311421	Artichokes, canned, manufacturing	1	999.1
493120	Bonded warehousing, refrigerated	1	978.9
112120	Dairy cattle farming	1	787.5
611110	Academies, elementary or secondary	2	515.1
452110	Department Store	1	493.7
325311	Ammonia, anhydrous and aqueous, manufacturing	1	170.2
813110	Bible societies	1	29.2
111940	Alfalfa hay farming	1	8.4
111332	Grape farming without making wine	1	2.6
3200	Manufacturing	1	2.3



California Solar Initiative

Data Annex – Reservation Time

Percentage of applications whose processing time between "Application Received" and "Confirmed Reservation" is:

	15 days or less		30 days or less		60 days or less		Greater than 60 days	
	Q1 2011	Q1 2010	Q1 2011	Q1 2010	Q1 2011	Q1 2010	Q1 2011	Q1 2010
RESIDENTIAL								
CCSE	23.0%	43.4%	80.9%	83.1%	98.7%	96.7%	1.3%	3.3%
PG&E	78.0%	63.6%	95.1%	94.5%	99.4%	98.9%	0.6%	1.1%
SCE	61.8%	19.7%	86.3%	52.1%	99.7%	86.5%	0.3%	13.5%
NON-RESIDENTIAL								
CCSE	0.0%	31.4%	0.0%	45.7%	0.0%	91.4%	0.0%	8.6%
PG&E	3.3%	19.8%	22.2%	47.4%	77.8%	84.5%	22.2%	15.5%
SCE	4.9%	13.6%	30.1%	33.3%	81.6%	63.0%	18.4%	37.0%



California Solar Initiative

Data Annex – Payment Time

	Residential		Non-Residential	
	Q1 2011	Q1 2010	Q1 2011	Q1 2010
CCSE				
EPBB Avg Days	19.2	29.2	14.4	20.1
EPBB Projects	633	758	16	15
PBI Avg Days	36.4	17.0	50.0	43.3
PBI Projects	9	16	1	3
PG&E				
EPBB Avg Days	24.0	12.7	19.5	16.1
EPBB Projects	2,099	2,109	90	40
PBI Avg Days	417.0	101.3	73.3	105.5
PBI Projects	1	10	29	29
SCE				
EPBB Avg Days	10.0	23.2	13.8	25.9
EPBB Projects	1,050	978	31	22
PBI Avg Days	43.5	59.4	42.0	53.0
PBI Projects	4	10	21	6



California Solar Initiative

Data Annex – Installation Time

Average Installation Time				
	Residential Q1 2011	Residential Q1 2010	Non-Residential Q1 2011	Non-Residential Q1 2010
CCSE	118.2	93.1	341.4	223.2
PG&E	154.6	134.3	303.4	218.6
SCE	104.6	75.9	232.3	138.4



California Solar Initiative

Data Annex – Interconnection Time

	Residential Q1 2011	Residential Q1 2010	Non-Residential Q1 2011	Non-Residential Q1 2010
PG&E	15.5	7.2	18.6	12.0
SCE	10.7	8.4	20.4	15.6
SDG&E	3.4	3.1	8.5	3.3



California **Solar** Initiative

Senate Bill 585 – Funding for CSI Non- Residential Projects Gil Topete – Office of Senator Christine Kehoe Via Conference Call



California **Solar** Initiative

California Solar Initiative Non- Residential Waitlist/Budget Update

Kim Ngo, PG&E



California Solar Initiative

Current Wait List Status

Current Waitlist Status			
Program Administrator	Sector	Capacity (MW)	Budget (\$)
PG&E	Residential	0	0
	Non-Residential	41.5	36,393,083
	Total	41.5	36,393,083
SCE	Residential	0	0
	Non-Residential	0	0
	Total	0	0
CCSE	Residential	0	0
	Non-Residential	7.6	5,918,903
	Total	7.6	5,918,903
Total		49.1	42,311,986

CCSE Non-Residential

- Applicable for all projects received after **October 8, 2010**

PG&E Non-Residential

- Applicable for all projects received after **December 23, 2010**

Data as of 4/13/11



California Solar Initiative

CSI Weekly Budget

		Program Goals		Confirmed		Under Review		Remaining		Program Achievements Currently Forecasted		
		Capacity (MW)	Budget (\$)	Capacity (MW)	Budget (\$)	Capacity (MW)	Budget (\$)	Capacity (MW)	Budget (\$)	Capacity (MW)	Final Step	Portion of Final Step (MW)
PG&E	Residential	252.368	211,628,000	138.662	184,486,679	2.814	988,852	103.748	26,152,468	245.224	10	43.330
	Non-Residential	512.383	552,165,000	294.241	543,544,630	2.541	4,474,961	5.354	4,145,409	302.136	8	55.566
	Total	764.750	763,793,000	432.903	728,031,309	5.355	5,463,814	109.102	30,297,877	547.360	N/A	N/A
SCE	Residential	265.650	222,767,000	74.325	139,599,742	0.915	1,012,005	189.771	82,155,254	265.011	10	52.491
	Non-Residential	539.350	581,226,000	274.527	501,949,150	10.689	3,457,384	145.378	75,819,466	430.594	9	86.951
	Total	805.000	803,993,000	348.852	641,548,892	11.604	4,469,389	335.149	157,974,719	695.604	N/A	N/A
CCSE	Residential	59.483	49,880,000	31.718	42,152,561	0.654	229,897	30.753	7,497,542	63.125	10	15.539
	Non-Residential	120.767	130,144,000	63.037	128,302,191	0.000	0	2.820	1,841,809	65.857	8	8.561
	Total	180.250	180,024,000	94.755	170,454,752	0.654	229,897	33.573	9,339,351	128.982	N/A	N/A
Total		1,750.000	1,747,810,000	876.509	1,540,034,952	17.612	10,163,100	477.824	197,611,947	1,371.946	N/A	N/A

To control against the possibility of overspending due to performance-based incentive (PBI) system overproduction, it is not guaranteed that all remaining incentive dollars will be allocated to new reservations at this time.



California Solar Initiative

CSI Quarterly Budget Update

All values in \$USD		Allocated Funds	Confirmed		Under Review		Remaining Funds	To Reach Goals fr. Confirmed		Funding Shortfall
		D.10-09-046 Table 7		Perf. Adj.		Perf. Adj.		Incremental	Total	
PG&E	Residential	211,628,000	184,264,017	184,490,772	827,692	827,788	26,309,440	28,037,909	213,356,469	1,728,469
	Non-Residential	552,165,000	506,575,040	534,114,114	4,228,666	4,481,843	13,569,042	122,010,339	660,606,296	108,441,296
	Total	763,793,000	690,839,057	718,604,886	5,056,358	5,309,631	39,878,483	150,048,248	873,962,765	110,169,765
SCE	Residential	222,767,000	137,421,117	137,823,439	1,680,997	1,680,997	83,262,564	83,850,676	223,355,112	588,112
	Non-Residential	581,226,000	470,807,705	497,009,798	9,197,571	9,740,396	74,475,807	116,554,113	623,304,306	42,078,306
	Total	803,993,000	608,228,822	634,833,236	10,878,568	11,421,393	157,738,371	200,404,789	846,659,418	42,666,418
CCSE	Residential	49,880,000	41,897,313	42,036,718	222,244	222,244	7,621,038	6,887,572	49,146,534	N/A
	Non-Residential	130,144,000	119,230,709	128,291,454	0	0	1,852,546	27,826,969	156,118,423	25,974,423
	Total	180,024,000	161,128,022	170,328,172	222,244	222,244	9,473,584	34,714,541	205,264,957	25,974,423
Total		1,747,810,000	1,460,195,902	1,523,766,294	16,157,170	16,953,268	207,090,438	385,167,578	1,925,887,140	178,810,606



California **Solar** Initiative

California Solar Initiative – Handbook Updates Ben Airth, CCSE



California Solar Initiative

CSI GM Proposed Handbook Changes

- December 3, 2010 Proposed Changes Include:
 - Mandatory One-Step Application Process for:
 - all Residential projects irrespective of size and
 - Non-Residential projects less 10 kW and
 - Host Customers who have been interconnection within the last 12 months and
 - Voluntary for Commercial projects greater than 10 kW
 - Application Fees are now due within 14 days of invoicing instead of the previous 30 days



California Solar Initiative

CSI GM Proposed Handbook Changes - Continued

- Reducing “cure” time from 20 days to 14 days
 - For all Residential and Non-Residential projects Suspended at any stage of the Application process
- RES-BCT (AB 2466) – Renewable Energy System Bill Credit Transfer for local governments only – allows local governments to offset multiple facility loads by installing on PV system at a site and transferring those bill credits – however, the PV system can only be sized to the load of the facility it is installed at
- AB 2724
- RFP requirement removed for gov’t/non-profit and public entities



California Solar Initiative

CSI GM Proposed Handbook Changes - Continued

- December 3, 2010 Proposed Changes Include:
 - Suspended Solar Contractor's License –
 - If a suspended license occurs under qualifying bond individual or responsible managing officer, that has previously been suspended from the Program under a different company name, the new company will also be suspended from the Program



California Solar Initiative

SASH Program

GRID Alternatives



Presenter: Cathleen Monahan,
SASH Program Officer



Phone: 510-731-1332

Email: SASH@gridalternatives.org or cmonahan@gridalternatives.org



California **Solar** Initiative

GRID Alternatives

Mission: To empower communities in need by providing renewable energy and energy efficiency services, equipment, and training.



- SASH Program Manager
- Non-profit 501(c)(3) organization
- Licensed solar electrical contractor
- Installation model centered around workforce development



California **Solar** Initiative

SASH Program

GRID Locations



- GRID has 6 regional offices serving all IOU territories
 - Oakland: serves greater Bay area/N. California
 - Carson: serves greater L.A.
 - Fresno: serves Central Valley
 - San Diego: serves San Diego area
 - San Luis Obispo: serves Central Coast
 - Riverside: serves Inland Empire
- 1 additional office in Chico opening by mid-2011



California **Solar** Initiative

SASH Program

A Comprehensive Low-Income Solar Program

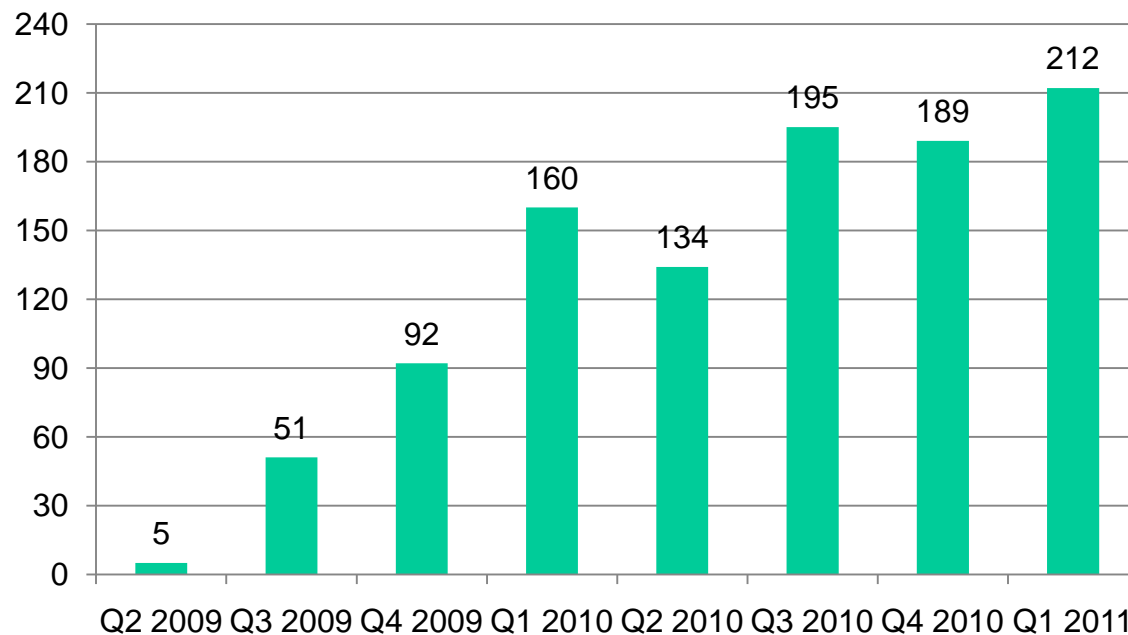
- Higher incentives than general market CSI Program
- Energy Efficiency
- Workforce Development
- Volunteers and Community Engagement



California Solar Initiative

SASH Program

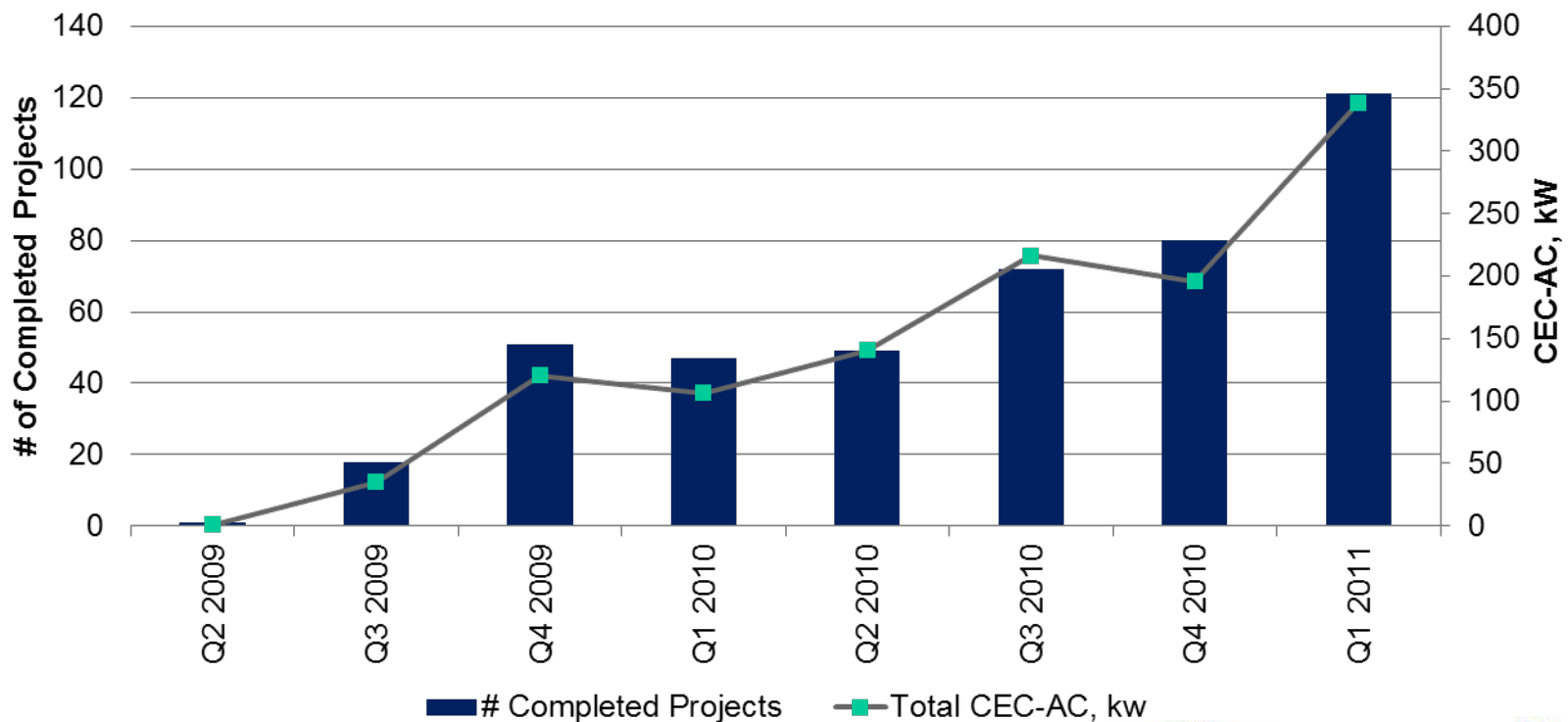
SASH Applications per Quarter



California Solar Initiative

SASH Program

Completed and Interconnected Projects



California Solar Initiative

SASH Program

Applications by Status and Service Territory (thru Q1 2011)



GRID Alternatives

Application Status	Number of Applications				Total kW, (CEC-AC)	Total Incentives, \$ millions
	PG&E	SCE	SDG&E	Totals		
STEP 1:						
Applications under review	180	130	21	331	827.5*	\$4.97*
STEP 2: Confirmed						
Applications/Reservations	68	118	9	195	643.2	\$4.14
STEP 3:						
Completed/Installed	251	125	90	466	1,207.20	\$7.90
TOTALS: All SASH Applications and Projects	499	373	120	992	2,677.90	\$17.01



California **Solar** Initiative

SASH Program

Longer-term Impact



- **Install PV- solar electric systems for 4,000-6,000 low-income CA families thru 2016**
- **Utilize Sub-Contractor Partnership Program to meet installation targets**
- **Create market transformation by providing opportunities for green jobs training, and help foster a sustainable solar industry in CA**



California **Solar** Initiative

SASH Program

Thank You

CONTACT:

Cathleen Monahan

SASH Program Officer

Ph: 510-731-1332

Email: cmonahan@gridalternatives.org

1171 Ocean Ave. Suite 200

Oakland, CA 94608

Web: www.gridalternatives.org/sash

Sign up for GRID's newsletter!



California **Solar** Initiative

California Solar Initiative MASH Update

Mike Tomlin

Southern California Edison Company



California Solar Initiative

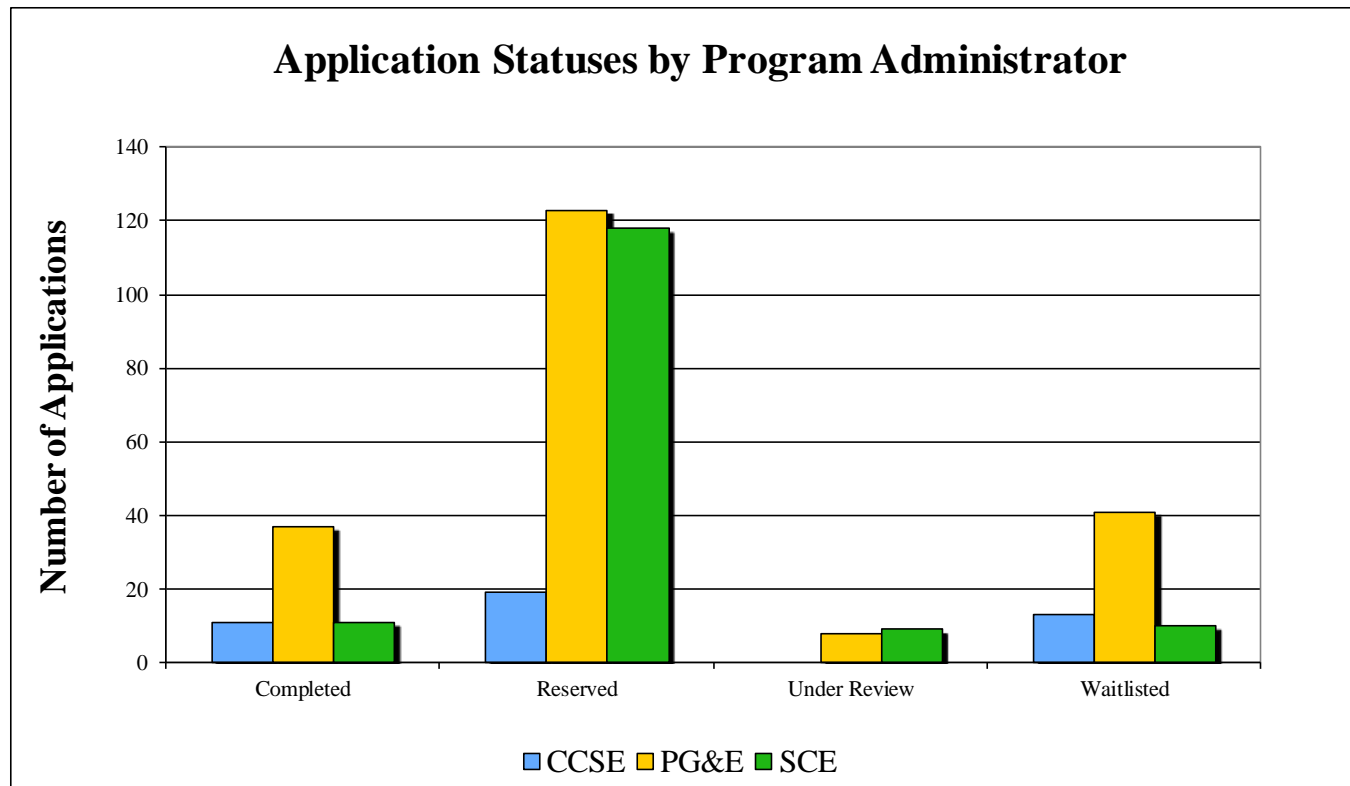
MASH Snapshot for March 2011

Multi-family Affordable Solar Housing Statewide Snapshot for March 2011	
Completed	59
Completed Capacity (MW)	2.919
Reserved	260
Reserved Capacity (MW)	16.397
Under Review	17
Under Review Capacity (MW)	0.971
Waitlisted	64
Waitlisted Capacity (MW)	6.639



California Solar Initiative

MASH Program Statistics



California Solar Initiative

MASH Reservation Expiration Dates

The majority of MASH Reservations complete or expire in 2011

- Request for Extending the Reservation Expiration Date up to 180 Calendar Days Requires:
 - Circumstances were beyond the control of the reservation holder;
 - Problem in the permitting process that caused delay;
 - Must have incurred at least 50 percent of the reserved system's purchase price; an
 - Documentation of any equipment installed at the Site
- Documentation must be in writing, detailed and specific including reason for the request, amount of time needed, correspondence to support explanation, copies of invoices, checks, or other verifying documentation
- Extension are more of the exception than the rule, so please only apply for an extension if you meet the qualifications above



Center for Sustainable Energy
CALIFORNIA



California **Solar** Initiative

CSI Thermal Program Update



California **Solar** Initiative

CSI-Thermal Program Overview

CSI-Thermal Program Administrators (PAs)

California Center for Sustainable Energy (CCSE)

- For gas or electric water heating customers of San Diego Gas and Electric (SDG&E) territory

Pacific Gas and Electric Company (PG&E)

- For gas or electric water heating customers of PG&E territory

Southern California Edison (SCE)

- For electric water heating customers of SCE territory

Southern California Gas Company (SCG)

- For gas water heating customers of SCG territory

California **Solar** Initiative

Program Overview

May 1: Single-family residential program launched

October 8: Multi-family/commercial launched

Contractors must complete the CSI-Thermal Program Workshop for eligibility

284 Registered contractors

Applications completed and tracked at www.csithermal.com

California Solar Initiative

Incentive Step Level Structure

Natural Gas

Step	Customer Class	\$/ therm displaced	Incentive Cap
1	Residential	\$12.82	\$1,875
	Commerical/ Multifamily		\$500,000
2	Residential	\$10.26	\$1,500
	Commerical/ Multifamily		\$500,000
3	Residential	\$7.69	\$1,125
	Commerical/ Multifamily		\$500,000
4	Residential	\$4.70	\$687.50
	Commerical/ Multifamily		\$500,000

Electric

Step	Customer Class	\$/ kWhr displaced	Incentive Cap
1	Residential	\$0.37	\$1,262.50
	Commerical/ Multifamily*		\$250,000
2	Residential	\$0.30	\$1,025
	Commerical/ Multifamily*		\$250,000
3	Residential	\$0.22	\$750
	Commerical/ Multifamily*		\$250,000
4	Residential	\$0.14	\$475
	Commerical/ Multifamily*		\$250,000

***NOTE: the budget for electric-displacing commercial systems is exhausted.
These projects will be placed on a wait list.**

Gas-displacing commercial and Multifamily Residential projects are still eligible for rebates.

www.csithermal.com/calculator



California **Solar** Initiative

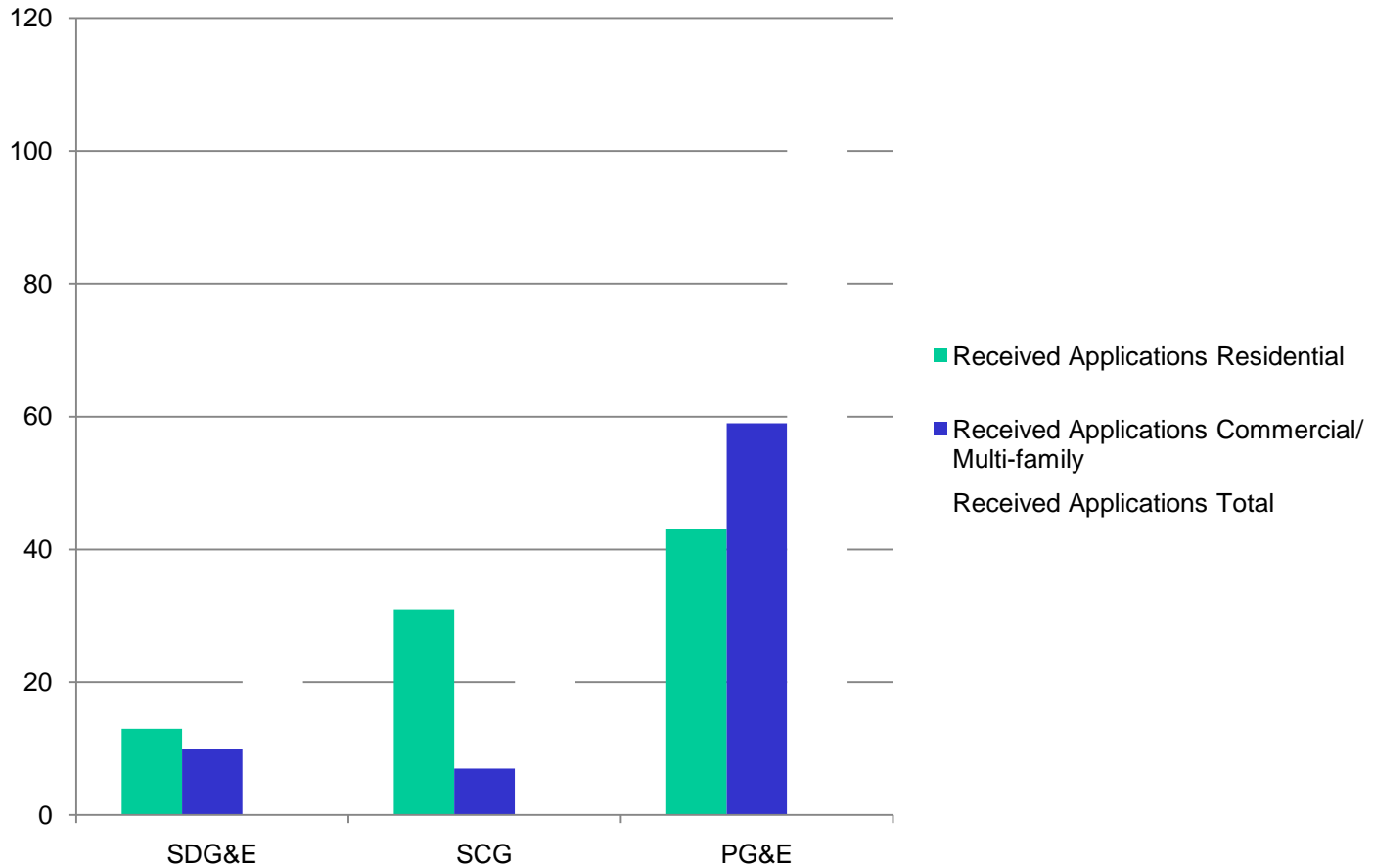
CSI Thermal Program Statistics

www.csithermal.com/public_export



California Solar Initiative

Gas: Received Applications

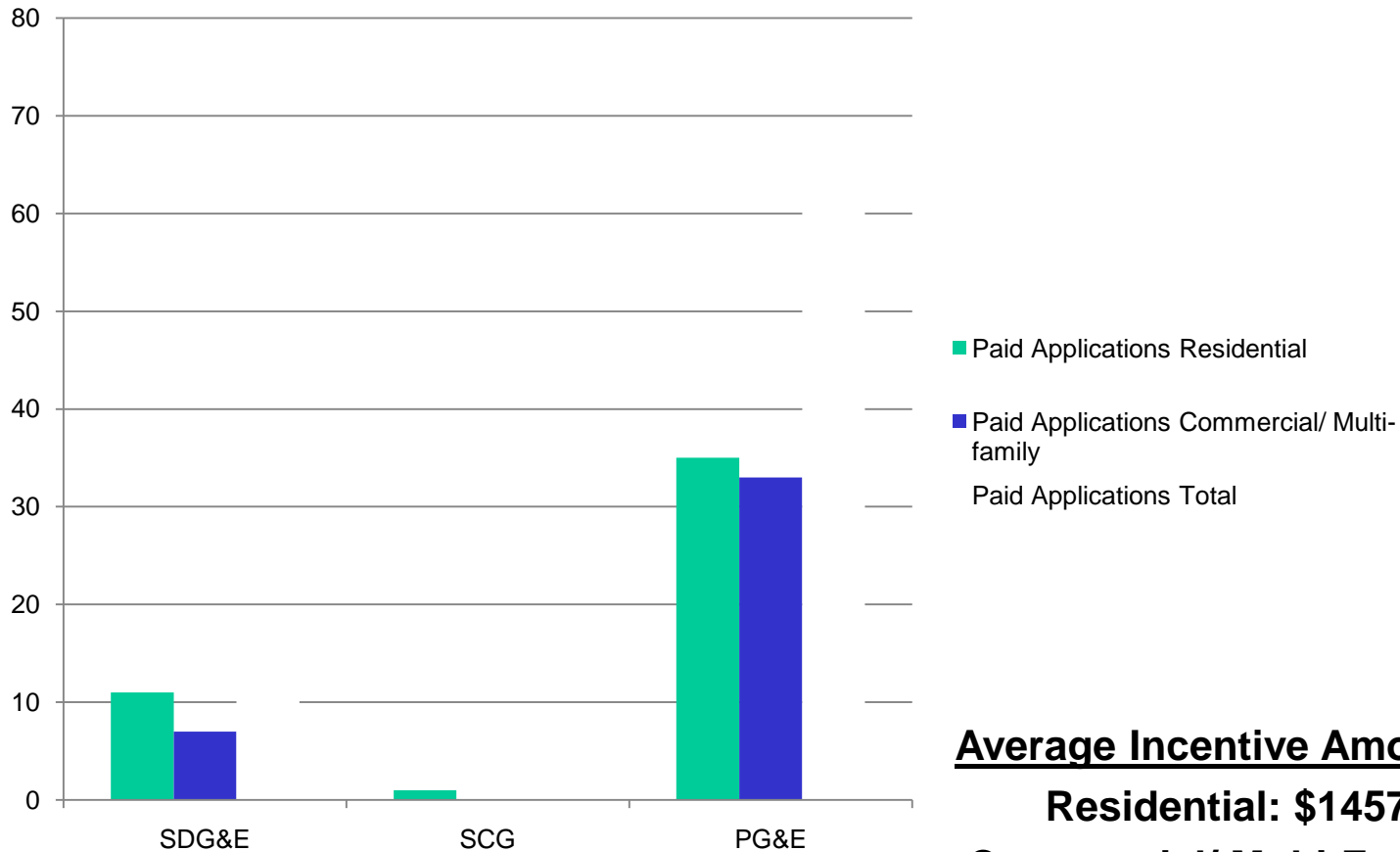


A Sempra Energy utility*



California Solar Initiative

Gas: Paid Applications



Average Incentive Amounts

Residential: \$1457

Commercial/ Multi-Family:

\$15,290

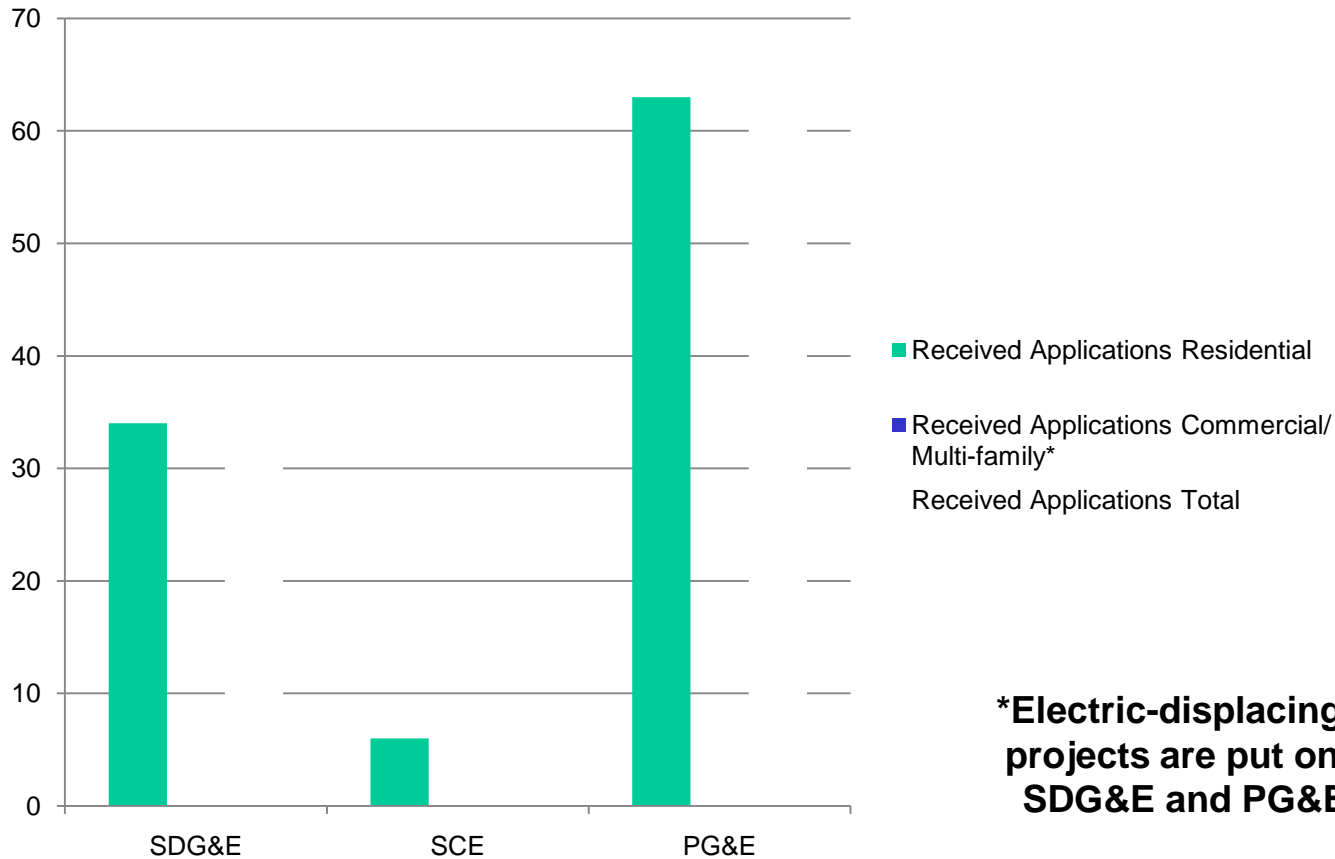


A Sempra Energy utility



California Solar Initiative

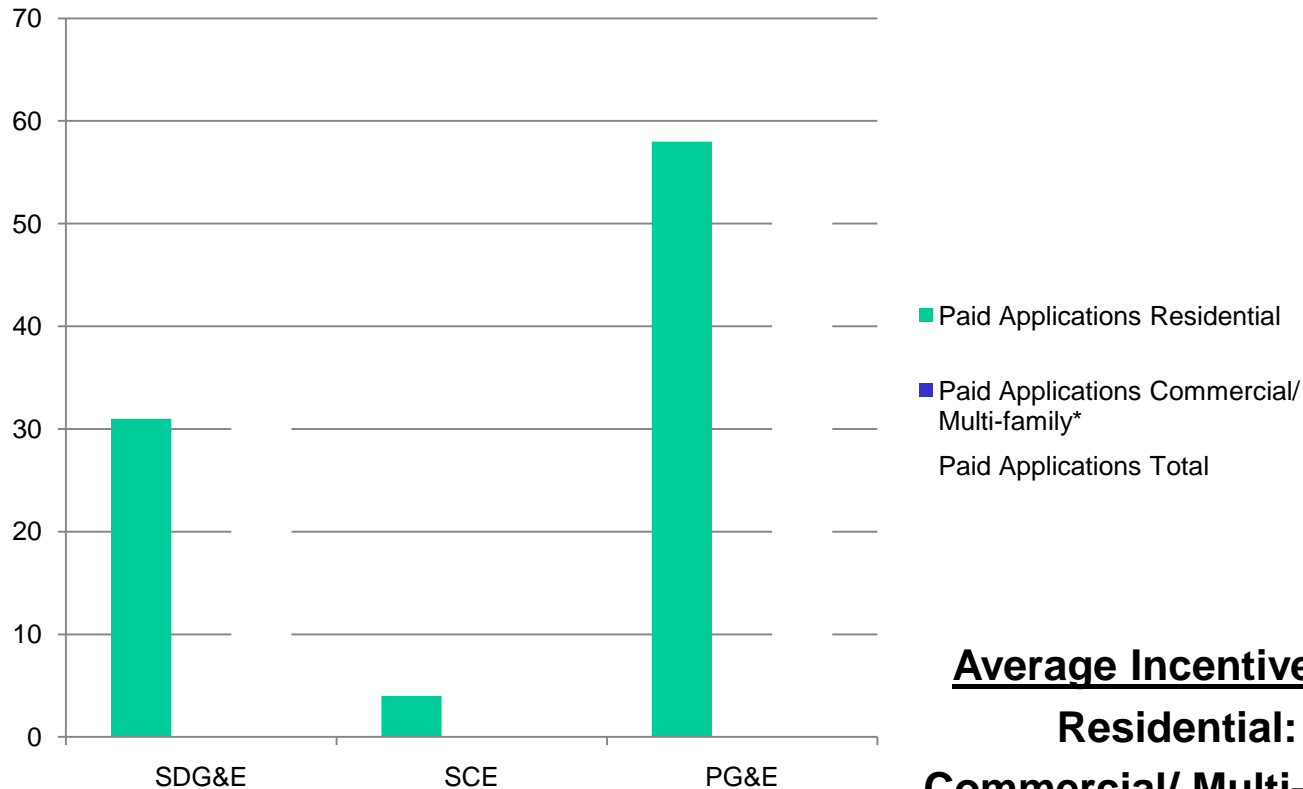
Electric: Received Applications



***Electric-displacing commercial projects are put on a waitlist in SDG&E and PG&E territories**

California Solar Initiative

Electric: Paid Applications



Average Incentive Amounts

Residential: \$984

Commercial/ Multi-Family: N/A



A Sempra Energy utility*



California **Solar** Initiative

CSI Thermal

Exhausted Non-Residential Incentives

- Both CCSE's and PG&E's CSI Non-residential incentives have been exhausted
- Therefore, CSI-Thermal Commercial Electric incentives are also exhausted for CCSE and PG&E
 - Decision 06-12-033 provides details on the CSI budget
 - Shared waitlist with CSI for new applications
 - Residential electric incentives are still available

California **Solar** Initiative

CSI Thermal Incentive Tracker

Track the remaining incentive step dollar amounts for each PA at:

www.csithermal.com/tracker



California **Solar** Initiative

Marketing Update

RFP released March 11- 27 registered to submit proposal

24 Agencies have submitted proposals

4/29 Bids are due from Agencies

Mid-June- Final agency selection

Late June/ Early July- Submission of final plan to CPUC

California Solar Initiative

CPUC Workshop- Other Technologies

The PAs held a public workshop discussing the opportunity to include other solar thermal technologies into the CSI-Thermal Program.

- February 23, 2011
- Other technologies include:
 - Process Heat
 - Space Heating
 - Space Cooling
 - Combination Systems
 - Direct Forced Circulation Systems

California Solar Initiative

Highlights!

**Contractor: Mariner
Mechanical/
Adroit Solar**

Multifamily Complex

SDG&E Territory

**Offset: 5491 therms
Annually**

Rebate Amount: \$69,471



California **Solar** Initiative

Program Administrators (PA)

Southern California Gas Company:

Phone: (800) Gas-2000

Email: swh@socalgas.com

Website:

www.socalgas.com/rebates/solar

Southern California Edison:

Phone: (866) 584-7436

Email: CSIGroup@sce.com

Website: www.sce.com/csithermal

Pacific Gas and Electric:

Phone: (877) 743-4112

Email: solar@pge.com

Website: www.pge.com/csithermal

California Center for Sustainable Energy (SDG&E territory):

Phone: (877) 333-SWHP

Email: swh@energycenter.org

Website:

www.energycenter.org/swh



A Sempra Energy utility*



Center for
Sustainable Energy
CALIFORNIA



California **Solar** Initiative

CSI-Thermal Program

Questions?

