

Multifamily Affordable Solar Housing (MASH)

July 16, 2009



California **Solar** Initiative

California Solar Initiative

- \$2.1B solar PV rebate program
- Managed by CPUC
- Designed to last 10 years (2007-2016)
- 10% of funds set aside for the low-income community



California **Solar** Initiative

MASH Program Goals

- **Stimulate adoption of solar power** in the affordable housing sector
- **Improve energy utilization** and overall quality of affordable housing through application of solar and energy efficiency technologies
- **Decrease electricity use and costs** without increasing monthly household expenses for affordable housing building occupants
- **Increase awareness and appreciation** of the benefits of solar among affordable housing occupants and developers



California **Solar** Initiative

MASH Budget

	PG&E	SCE	CCSE	Total
Budget %	43.7%	46%	10.3%	100%
Track 1A and 1B	32,923,230	34,656,032	7,759,938	75,339,200
Track 2 (20%)	8,740,000	9,200,000	2,060,000	20,000,000
Administration (12%)	5,681,350	5,980,368	1,339,082	13,000,800
Total	47,344,580	49,836,400	11,159,020	108,340,000



California **Solar** Initiative

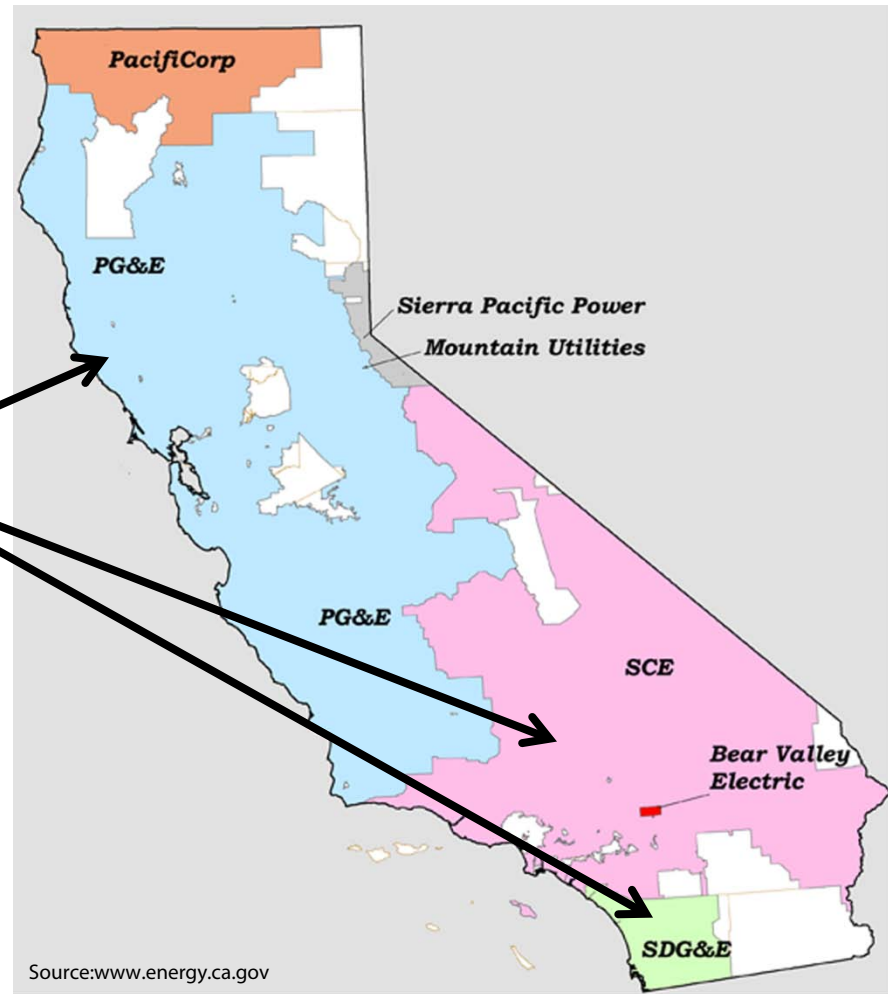
What buildings qualify for MASH rebates?

- Multifamily Affordable Housing as defined in Pub. Util. Code 2852.a.2
 - Financed with Low-Income Housing Tax Credits, Tax Exempt Mortgage Revenue Bonds, or General Obligation Bonds
 - Financed with Local, State or Federal Loans and Grants and meets Health and Safety Code Section 50079.5
 - At least 20% of units are rented to lower income households and are subject to a deed restriction or affordability covenant for at least 30 years
- Has an occupancy permit for at least **two** years



California **Solar** Initiative

Available to customers in PG&E, SCE and SDG&E territories



California Solar Initiative

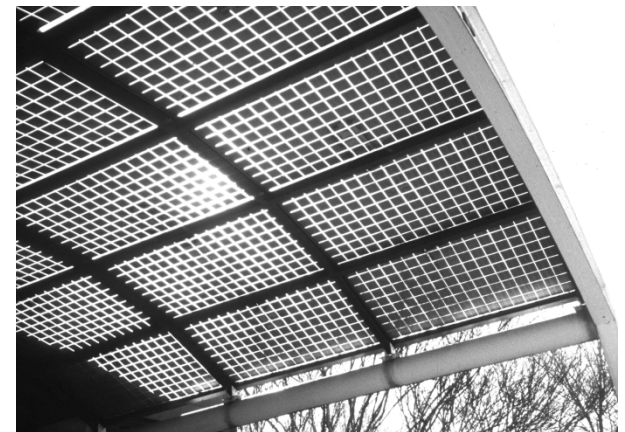
Track 1 – Application were made available 2/17/09

Provides rebate based on the size of the system installed

- 1A Offset Common Area Load = \$3.30/Watt
- 1B Offset Tenant Area Load = \$4.00/Watt

- Projects can be a combination of Track 1A and Track 1B

- 3-step application process – Forms available at www.energycenter.org/mash



California **Solar** Initiative

Track 2

- Allows AH owners and managers to apply for higher incentives (up to 100% of installation costs) if additional tenant benefit is demonstrated in the following categories:
 1. Direct financial benefit,
 2. Energy efficiency upgrades
 3. Outreach and education
 4. Green job training or creation
- Competitive grant-style application format



California Solar Initiative

Track 2

- 2 cycles per year – CCSE can award up to \$412,000 per cycle
- First cycle began 7/1/09 and applications are available at www.energycenter.org/mash
- Applications must be submitted by 9/30/09
- Awards announced 4Q 2009



California **Solar** Initiative

Upcoming Workshops

- Intro to MASH – July 29th
- Virtual Net Metering – August 14th
- Track 2 Application Process – Mid August



California **Solar** Initiative

Contact Information

California Center for Sustainable Energy
8690 Balboa Ave., Suite 100
San Diego, CA 92123

Jeremy Hutman, Program Manager
Multifamily Affordable Solar Housing

858-244-7281

MASH@energycenter.org

www.energycenter.org/mash

