



Home Energy Retrofit Programs

Putting It All Together



Brian Gitt, Principal

Present Barriers

Policy: Lack of effective state and local government retrofit trigger mechanisms

Technical: Fragmented existing building stock requires complex solutions and is difficult to scale

Consumer: Widespread lack of awareness of costs and benefits

Financing: Not widely available and tied to owner not property

Workforce: Gaps in knowledge, skills, and experience limit scale

Delivery: Lack of coordination between existing low, moderate, and upper income programs

Research: Gaps in research data and difficult to access



Recent Legislative & Regulatory Initiatives

- AB32 & scoping plan
- PUC's strategic plan
- Local government CO2 reduction goals
- Green Building Standards Code
- AB811
- Utility programs 2009-2011
- HERS II
- American Recovery and Reinvestment Act (ARRA) of 2009

American Recovery and Reinvestment Act of 2009

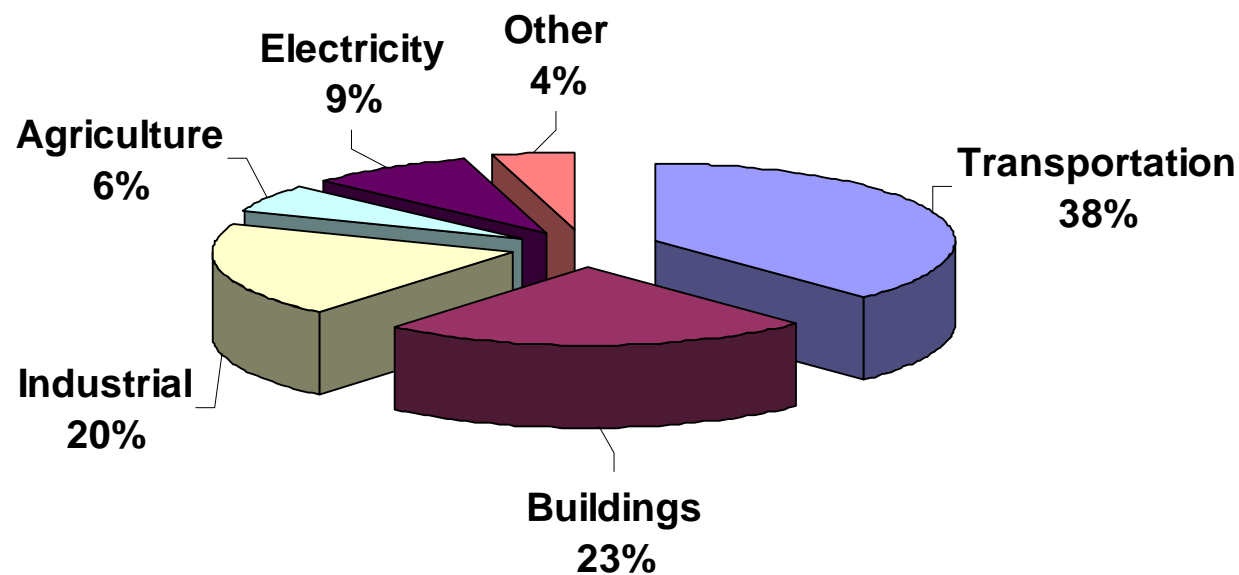
- **State Energy Program - \$3.1B**CEC \$226M
- **Energy Efficiency & Conservation Block Grants - \$3.2B**
...CA local governments \$302M & CEC \$49.6M
...also \$456M competitive grant opportunities
- **Neighborhood Stabilization Program – \$2.0B**
- **Green Jobs - \$500M**
- **Weatherization Assistance Program - \$5B**... CSD \$185M
- **Energy Efficient Appliance Rebate Programs - \$300M**
...CEC \$30M

CEC website: www.energy.ca.gov/recovery



Why Focus on Buildings?

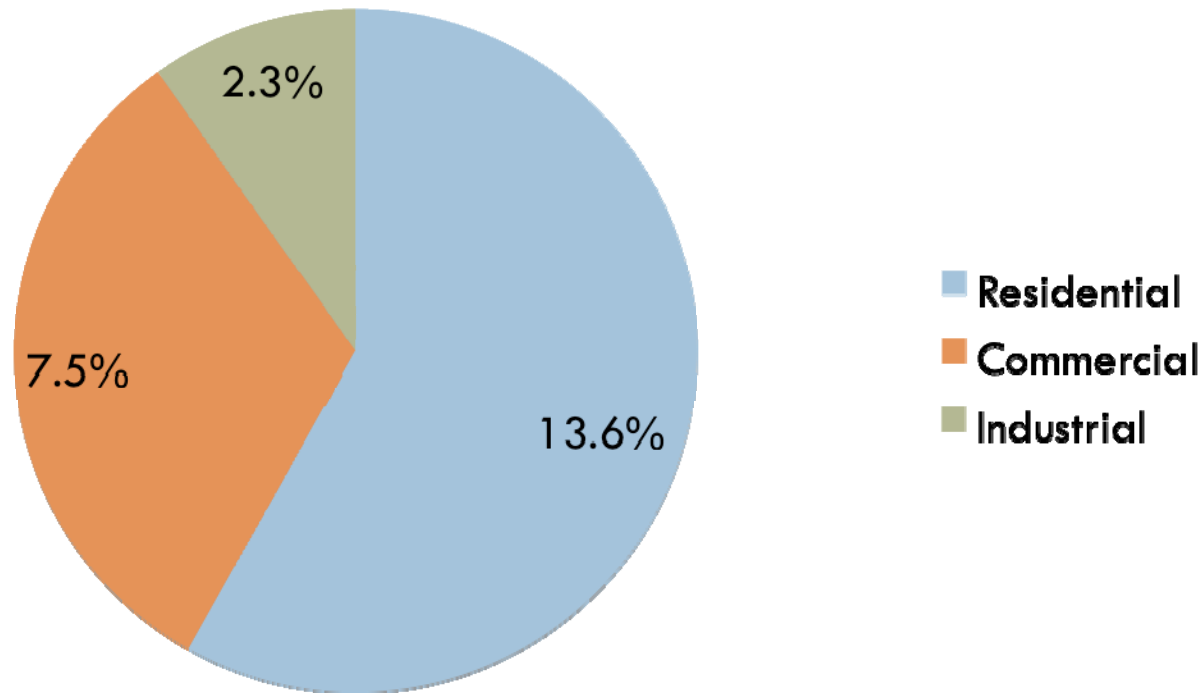
California 2004 GHG Emissions (484 MMT CO₂E)



Source: California Air Resources Board

Why Focus on Residential?

CO2 Emissions by Building Type



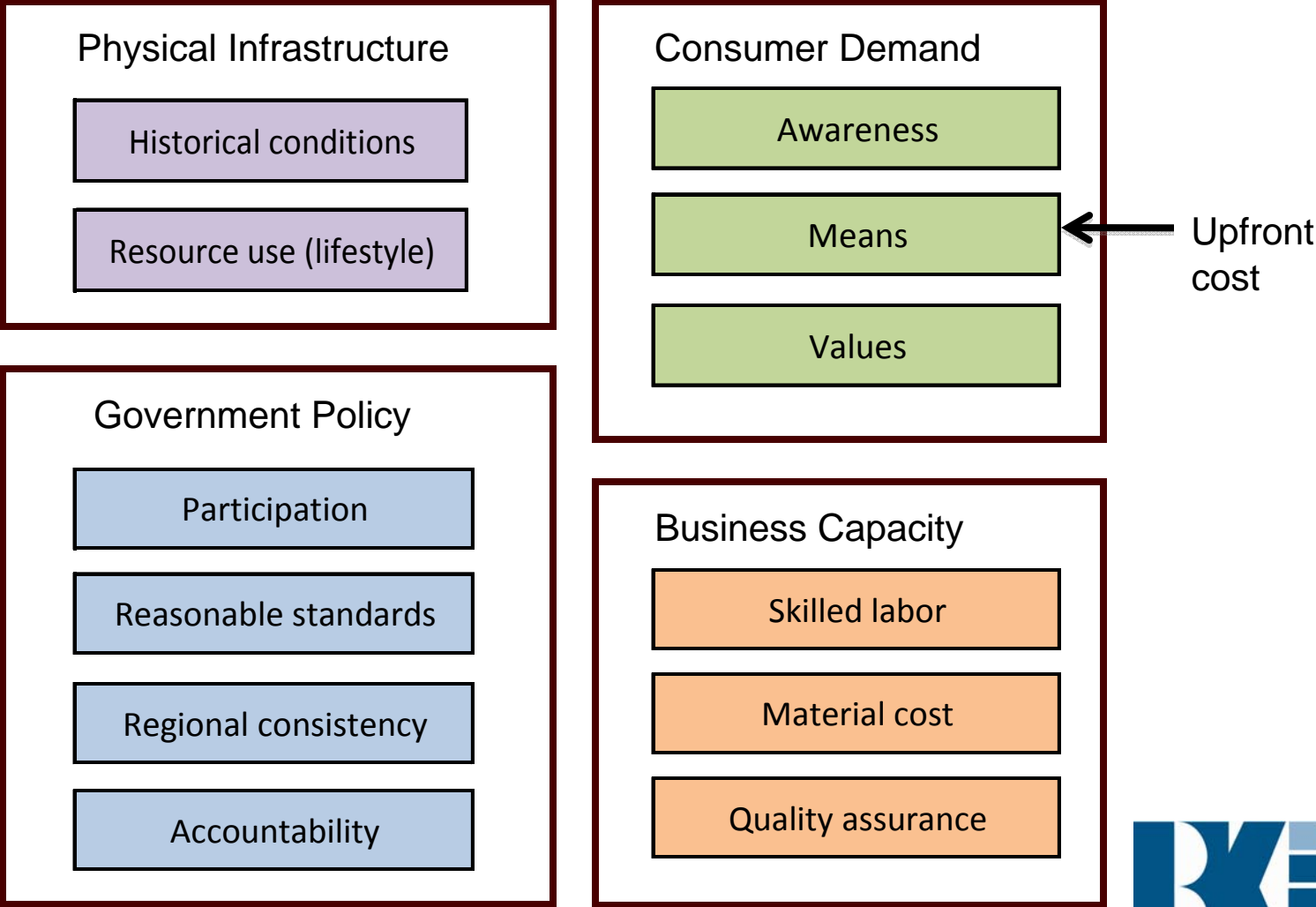
Source: California Air Resources Board

Why Focus on Existing Homes?

- **2/3 of all buildings in 2050 have already been built**
- **13.2M housing units statewide**
- **75% of existing homes built before 1980**



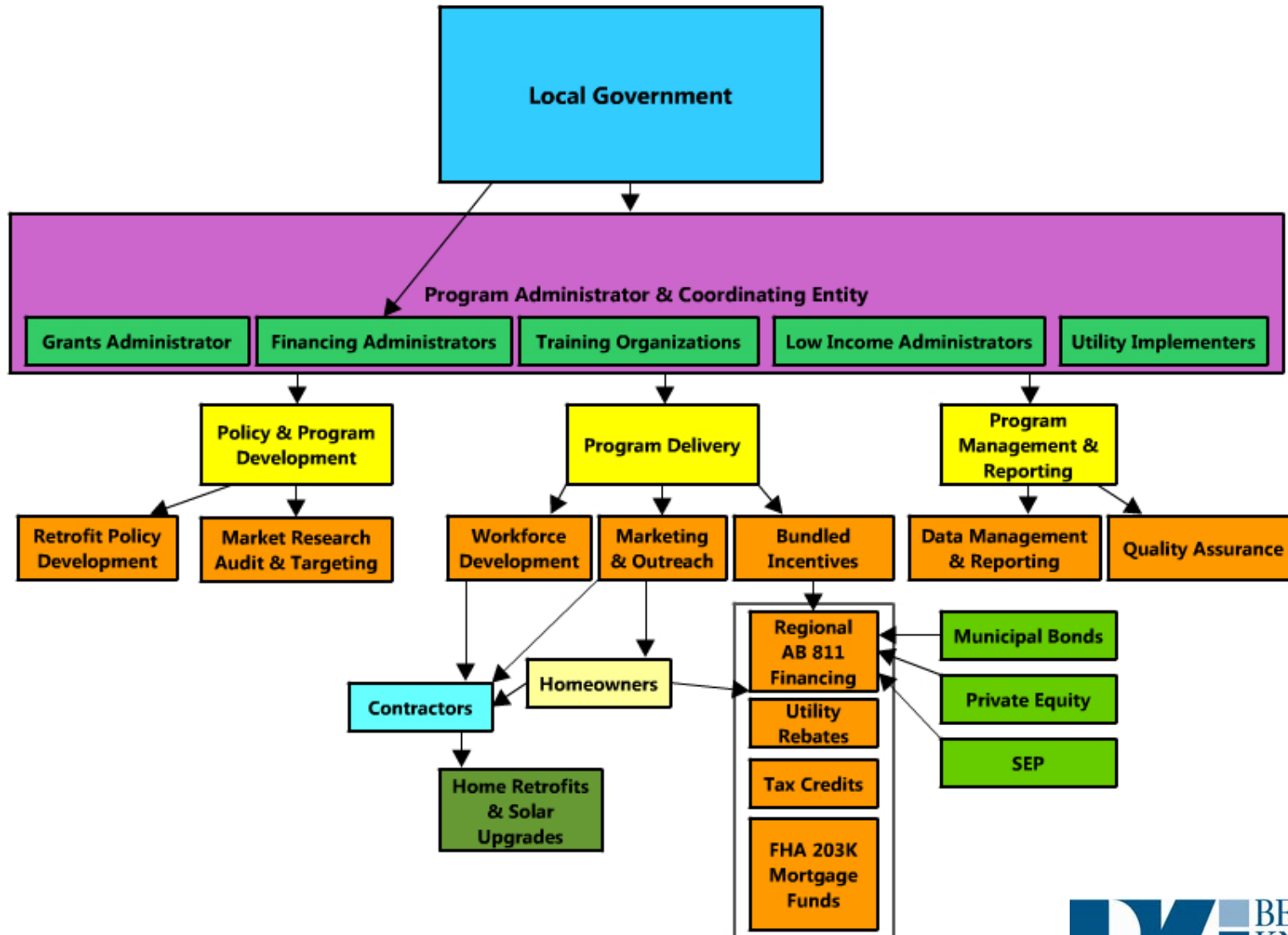
Tackling the Existing Homes Sector: The Challenges (The Big Picture)



AB811 Programs



Program Elements



Benefits of Coordination

- Economies of scale
- Comprehensive network of workforce development, quality assurance, and resource benefit tracking expertise
- Leveraging and coordination of funding sources
- Consistent regional messaging, marketing and education
- Coordination with other partners (water agencies, COG, etc.)
- Save time and cost in doing the AB811 financing district
- Consistent program design

Recommended Next Steps

- ✓ Identify internal champion
- ✓ Prioritize portion (10%-15%) of EECBG funds to develop and oversee comprehensive retrofit program
- ✓ Coordinate regionally to ensure scalable program model
- ✓ Engage 3rd party implementers to support program development
- ✓ Assess and select financing district options
(*e.g. Mello Roos, County AB811, or CSCDA AB811*)

Contact

BKi

Brian Gitt, Principal

510-444-8707 ext. 238

brian@bki.com

1000 Broadway, Suite 410

Oakland, CA 94607



Program Funding Flow

