

Guide to

# Going Solar



Now  
featuring

**solar water  
heating**



GO **solar**  
CALIFORNIA



# TABLE OF CONTENTS

- California Leading the Way to a Brighter Future ..... **3**
- How Solar Generation Works ..... **4**
- A Closer Look: Types of PV Panels and Inverters ..... **5**
- Net Energy Metering ..... **7**
- Solar Generation System Costs ..... **9**
- Solar Water Heating ..... **12**
- Three Steps To Go Solar! ..... **14**
- How Your California Solar Initiative Rebate is Calculated ..... **19**
- Glossary of Commonly Used Terms ..... **21**
- How to Contact the Program Administrators ..... **25**
- How To Make Smart Choices When Going Solar ..... **27**
- Comparing Contractor Bids ..... **28**
- Online Resources ..... **29**

This guide is for utility customers of  
**San Diego Gas & Electric** and **Southern California Edison** only.



*(CCSE is the Program Administrator in SDG&E service territory.)*

Get information about solar in the PG&E service territory at [pge.com/solar](http://pge.com/solar).

... tap the state's most abundant natural resource — the sun ...



## CALIFORNIA LEADING THE WAY TO A BRIGHTER FUTURE

---

### The California Solar Initiative

Since its launch in 2007, the California Solar Initiative (CSI) has been helping to make clean and reliable energy from the sun even more accessible in a state that has long been a national leader in environmental stewardship.

With assistance from rebates provided by the CSI Program, more than 1.5 gigawatts of solar generation have been installed since 2007; and many of your friends, neighbors and relatives now tap into the state's most abundant natural resource — the sun — for their power.

Purchasing a solar photovoltaic (PV) system for your home or business is a smart investment, and this guide can help you make educated decisions to maximize that value. While this guide provides an easy-to-understand overview of solar energy, you should contact an experienced solar contractor for comprehensive technical or economic considerations unique to your energy needs.

By “going solar,” you reinforce California's commitment to a healthy environment and a strong economy, leaving a legacy of clean energy for generations to come.

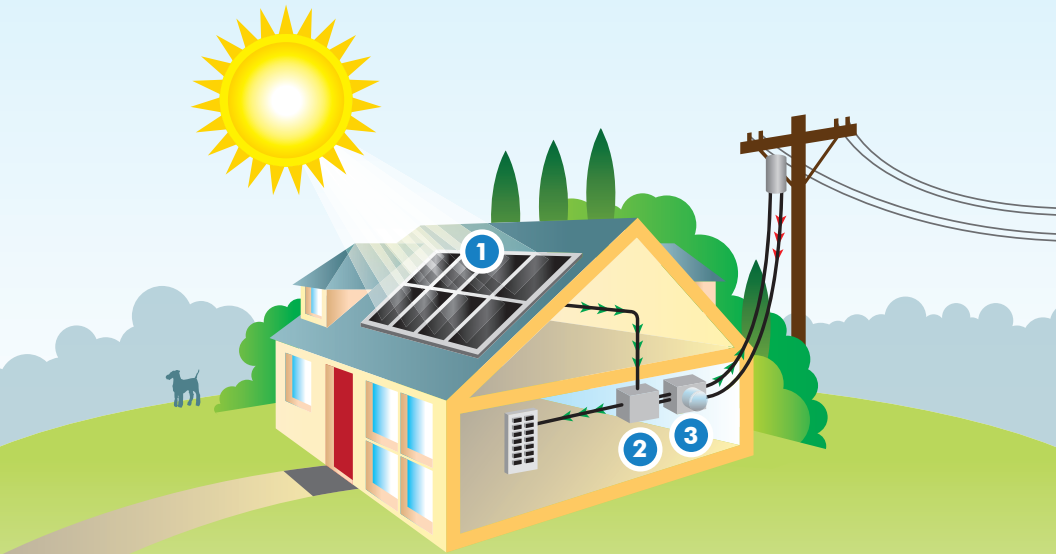
# HOW SOLAR GENERATION WORKS

Solar PV systems capture sunlight and convert it into electricity that can be used to power everything that traditional electricity powers — from lights and appliances to electric cars.

Solar PV systems are composed of individual solar cells that are configured onto a solar panel or module. When sunlight shines on a solar cell, the cell absorbs the light's energy and produces a flow of electrons, known as direct current (DC) electricity.

Because appliances and machinery operate on alternating current (AC), a device called an inverter converts the DC electricity to the AC power necessary to power your home or business.

PV cells work any time the sun shines and will produce more electricity when sunlight strikes the PV modules directly rather than at an angle.



1. Individual **PV cells** are connected to panels. Solar panels convert sunlight into DC electricity.
2. **Inverter** converts DC into AC for powering electric units in the home.
3. The **utility meter** records the net amount of energy generated through the PV system. When you are creating more electricity than you are using, your meter will spin backward and the excess electricity is sent to the electric grid. This helps to offset the cost of your electricity usage at night or on cloudy days when your system cannot produce electricity.

# A CLOSER LOOK: TYPES OF PV PANELS AND INVERTERS

## Types of Solar Panels

**Crystalline Silicon:** Rigid panels comprised of silicon cells sandwiched between protective glass sheets are the dominant solar technology on the market. They are generally the most cost effective and efficient in terms of energy production; however, they are more susceptible to the effects of shade and high temperatures, which reduce the amount of electricity that these types of panels can produce.

**Thin-Film:** These relatively inexpensive, flexible panels are less susceptible to the effects of shade and heat, but are not as efficient as traditional crystalline silicon panels. This

technology is often suitable for buildings with a larger rooftop area because it takes more thin-film panels to produce the same amount of electricity as traditional silicon panels.

### Did You Know?

▶ Solar electricity is no different from the electricity delivered by your local utility. Solar generation systems connect directly to your electrical panel or circuit breaker box and interface seamlessly with your utility power.

**Building Integrated Photovoltaic (BIPV):** BIPV are PV materials incorporated into the construction of an actual building — such as roof tiles, windows or part of a building's facade. Typically made from thin-film cells, BIPV systems tend to be less efficient in terms of producing electricity but can be more aesthetically appealing.

## Types of Inverters

**Central Inverter:** A central inverter converts the DC electricity produced by the entire solar array into AC electricity. In residential installations, the inverter is usually located on the side of the house or garage that is close to the utility meter.

**Microinverters:** Microinverters are smaller devices connected to the back of each individual panel in a solar array. Although generally more expensive than a single central inverter, microinverters diminish the effects of shading on a solar system's total energy output because any loss of efficiency in one panel does not diminish the output from the rest of the array.

Talk to your contractor about which technology best suits your needs. A list of CSI rebate-eligible panels and inverters is available at [www.gosolarcalifornia.com/links/equipment\\_links.php](http://www.gosolarcalifornia.com/links/equipment_links.php).

...the excess energy automatically flows through a bidirectional electric meter to the utility grid, running the meter backwards ...



## NET ENERGY METERING

California investor-owned utilities (IOUs) offer solar customers the benefits of net energy metering (NEM), a special billing arrangement that credits customers' accounts for the solar energy that their systems supply.

### How Net Energy Metering Works

A solar PV system may produce more or less electricity than a customer needs at any given time. When the system's production exceeds the customer's electrical use, the excess energy automatically flows through the electric meter to the utility grid. At times when the customer's electricity use is higher than the solar system's production, the customer relies on additional power from the utility.

Under an NEM agreement, your utility reads your meter monthly and sends a statement summarizing the net amount of electricity you consumed from or supplied to the grid during that billing period. This results in either a credit or a charge to your account. If you are a residential or small commercial customer, the charges and credits are reconciled every 12 months, after which you must pay any remaining balance.

Customers with net surplus energy after their 12-month billing period has ended (meaning the system generated more electricity in total than was consumed) will be given a monetary value for the excess kilowatt-hours (kWh) at a special rate. Options for receiving payment vary, so contact your utility for more details.

### Did You Know?

▶ Virtual NEM allows the electricity produced by a single solar installation to be credited toward multiple tenant accounts in a multifamily or commercial building without requiring the solar generation system to be physically connected to each tenant's meter. For more information on how virtual NEM can work for you, contact your utility.

Something to consider when sizing your system is whether you seek to offset your entire electrical use or simply reduce it.



## SOLAR GENERATION SYSTEM COSTS

With the help of the California Solar Initiative (CSI) Program, the cost of solar power in California has decreased by nearly 30 percent since 2007. The up-front cost of a PV system depends on factors such as how much of your electrical requirements you would like to offset (system size), equipment options, location, labor costs and local permitting costs. Long-term cost impacts depend on your utility rate and financing terms.

Costs are measured in terms of dollars per Watt. Through 2013, the average installed cost for residential-sized systems (i.e. less than 10 kW) was \$5–\$6 per Watt. Therefore, a typical 5-kW residential system would cost \$25,000–\$30,000. State rebates and federal tax incentives reduce this cost even further. To find out more about current solar costs in your area, visit [www.californiasolarstatistics.com](http://www.californiasolarstatistics.com) and click on “Cost by Quarter.”

### Sizing Your System

System size is the first factor in determining the cost of a solar generation system. Although the average residential system size is about 5 kW, several factors impact the optimal system size for you, including your 12-month prior electricity usage, desired bill and energy offset and available space for the system. Something to consider when sizing your system is whether you seek to offset your entire electrical use or simply reduce it. Many customers install smaller systems that offset only the highest, most expensive billing tiers,

### Did You Know?

▶ To help protect consumers, the CSI Program has developed a cost cap that tracks the average annual cost per Watt for systems. In order to receive an incentive, the system cost must fall under the cost cap amount; otherwise, the solar contractor must provide justification for the higher-than-average system cost.

Customers who “go solar” not only receive the benefit of the CSI rebate, but they may also be eligible to receive the 30 percent **federal investment tax credit (ITC)**, which further reduces the cost of a solar generation system. Be sure to consult a tax professional to determine your eligibility for the federal ITC and any other credits that might be available.

saving money in up-front costs as well as on their utility bills. Other customers realize the cost savings of solar by utilizing time-of-use (TOU) rates from their local utility because peak solar generation (typically summer afternoon hours) offsets the highest cost of electricity. When choosing the system size for your home, be sure you clearly understand your utility rate options and the potential impact on your utility bill. As a rule of thumb, you will need approximately 100 square feet of roof space for each kW installed. For reference, 1 kW will produce about 1,500 to 1,800 kWh per year; however, actual production may vary.

Costs for all goods and services, including electricity, increase with normal inflation. In some years, utility costs increase and other years they may decrease. When forecasting future energy costs, it's a good idea to check with your utility about historical inflation of electric rates.

## Financing Options

Many contractors are able to offer their customers a variety of financing options to help them “go solar.” The three most common financing options include purchasing the solar generation system, leasing the system or entering into a power purchase agreement (PPA).

System Ownership	Lease/Power Purchase Agreement (PPA)
<b>What are you paying for?</b>	
The cost of a solar generation system that offsets some or all of your electricity needs.	<p><b>Lease:</b> A fixed monthly rate no matter how much electricity is produced.</p> <p><b>PPA:</b> A fixed amount of money per kWh produced.</p>
<b>What are you buying?</b>	
All of the components of the PV system including the solar panels, inverter and metering equipment. You can also buy performance monitoring software, extended service agreement and other options.	A service that may or may not have a purchase option.

System Ownership	Lease/Power Purchase Agreement (PPA)
<b>What is included in the purchase?</b>	
All of the equipment including labor, state and local taxes, a minimum 10-year warranty and any other administrative paperwork associated with permitting, interconnection, incentive application and sometimes monitoring.	Commonly labor, state and local taxes, administrative paperwork (permitting, interconnection and incentive application), operations and maintenance, inverter replacement, insurance, monitoring and production guarantees.
<b>What is not included in the purchase?</b>	
Generally inverter replacement after the warranty period ends, operating costs, maintenance costs, insurance and monitoring service.	The solar generation system.
<b>What are the tax implications?</b>	
Check with your tax consultant to determine if you qualify for the 30 percent federal ITC. If financed through a home equity loan, you may also be eligible for a tax deduction.	As the system owner, the solar services provider typically receives the 30 percent ITC and the CSI rebate (if available) and may receive commercial depreciation tax benefits.
<b>What are the risks?</b>	
Owner is responsible for operations and maintenance costs and should always be aware of system performance to ensure it is maximizing energy production (data monitoring systems are critical).	Solar services provider may go out of business and be unable to provide operations and maintenance under the contract. PPAs usually have rates that escalate over time and usually have long-term commitments of 25 or more years. Be sure to discuss buyout options, if not specified in the contract.
<b>What happens if I move?</b>	
New homeowner buys the asset in the purchase price of the house.	Work with solar service provider to transfer lease/PPA obligation to new homeowner or buy out the remainder of the contract at “fair market value.”
<b>What are the financial benefits?</b>	
Greater return on investment compared to other investment opportunities and increased home value. Lower electricity bills, however, still responsible for paying amount that solar PV system does not offset.	Little or no up-front cost. Prepaid leases may help reduce monthly payments. Typically cash positive or neutral in first year. Lower electricity bills, however, still responsible for paying amount that solar PV system does not offset.

# Solar Water Heating

## *The next step in your green routine*

### What is **SOLAR WATER HEATING**?

A solar water heating (SWH) system captures the warmth of the sun, transfers that heat to water and works with your conventional water heater or boiler to help it use less energy.

Unlike solar power systems (photovoltaics or PV) that collect light energy from the sun and convert it into electricity, solar water heating systems absorb the heat energy of the sun and use it to heat water. Since it involves heat energy, the technology is referred to as solar thermal.

### What are its **BENEFITS**?

Solar water heating can have a number of benefits for single-family residences, multifamily dwellings and commercial enterprises. They include:

- Reducing the amount of energy used to heat your water
- Lowering the cost of heating your water
- Reducing harmful greenhouse gas emissions
- Helping your home or business become more sustainable

The more hot water you use in your home or business, the more energy savings you can achieve. Your solar water heating system can be scaled to meet your needs by installing a tank with sufficient hot water storage capacity and adjusting the number of solar collectors installed.

### Go Solar with the California Solar Initiative (CSI) – **THERMAL PROGRAM**

The CSI-Thermal Program offers rebates to single-family residential, multifamily dwelling owners and business customers who: 1) heat their water with electricity, natural gas or propane; 2) install a qualifying solar water heating system; and, 3) are customers of one of the four investor-owned utilities in the state.\*

- Southern California Gas Company (SoCalGas®)
- Pacific Gas and Electric Company® (PG&E)
- Southern California Edison® (SCE)
- San Diego Gas & Electric® (SDG&E®) — California Center for Sustainable Energy® (CCSE) is the Program Administrator

\*Restrictions, requirements and qualifications apply.



To learn more about solar water heating and the CSI-Thermal Program, visit:

[waterheatedbythesun.com](http://waterheatedbythesun.com)



The CSI-Thermal Program is funded by California investor-owned utility customers and is administered by regional Program Administrators under the auspices of the California Public Utilities Commission. Program may be modified or terminated without prior notice, and is provided to qualified customers until the program funds are no longer available. Program Administrators are not responsible for any goods or services selected by the customer.

© 2013 California Center for Sustainable Energy, Pacific Gas and Electric Company, Southern California Edison and Southern California Gas Company. Copyright and trademarks belong to their respective owners. All rights reserved.



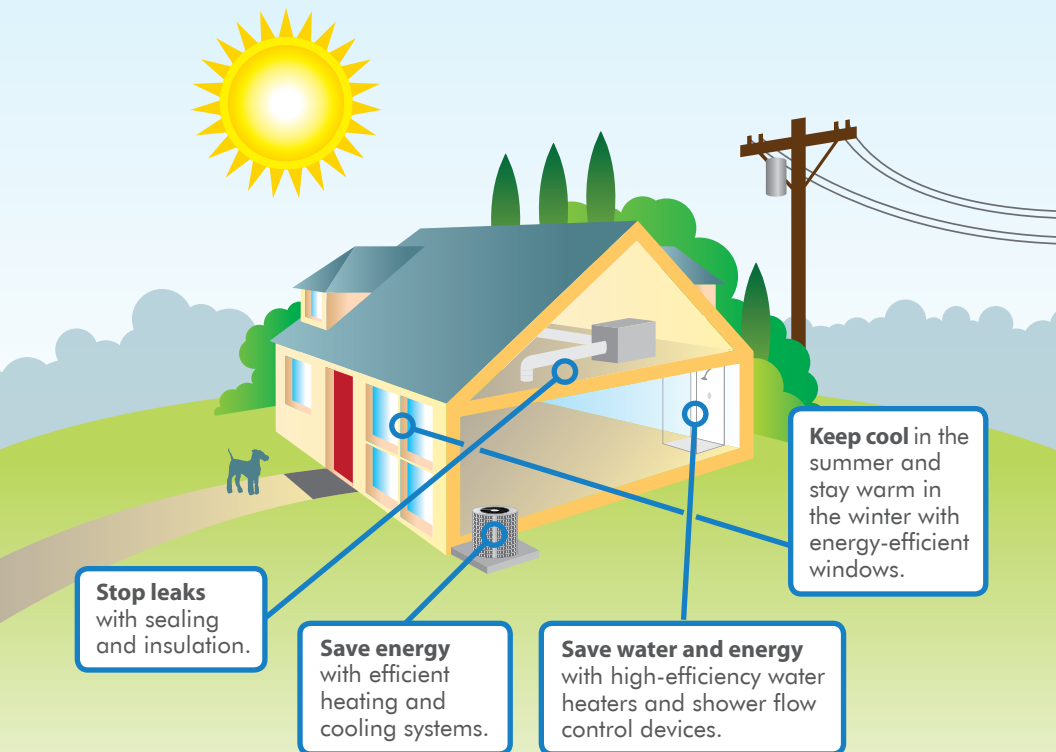
# THREE STEPS TO GO SOLAR!

- 1 Improve the energy efficiency of your home or business
- 2 Choose the right solar contractor for your needs
- 3 Install system

## 1. Energy Efficiency Before You “Go Solar”

Making your home or business energy efficient before going solar is an essential first step. Energy-saving actions — such as changing incandescent bulbs to CFLs or LEDs and replacing old, inefficient appliances with ENERGY STAR® products — are the best way to reduce your energy use and save money before you “go solar.”

By reducing your overall energy use before going solar, you can reduce the size of your solar generation system, potentially saving thousands of dollars in up-front costs.



You will need to complete a simple energy efficiency audit of your home or business before applying for a CSI rebate. This will help you understand how you can save energy and allow you to better estimate your future energy use, which will help to ensure your system is sized appropriately. In addition, understanding your energy usage will help prepare you to talk with solar contractors.

Your CSI Program Administrator can provide you with an easy online energy audit form.

CCSE (for SDG&E customers): [www.energycenter.org/solar](http://www.energycenter.org/solar)

PG&E: [www.pge.com/solar](http://www.pge.com/solar)

SCE: [www.sce.com/gosolar](http://www.sce.com/gosolar)

## 2. Choosing the Right Solar Contractor

Hiring a qualified and competent solar contractor is key to getting a productive solar generation system for your home or business. While California has many capable solar contractors, the resources below will provide you with the tools needed to pick the one who will best suit your needs.

### How to Research Contractors

**Contractors State License Board (CSLB):** Make sure your contractor has an active A, B, C-10 or C-46 license — a requirement to participate in the CSI Program. [www.cslb.ca.gov](http://www.cslb.ca.gov)

**CSI Contractor Database:** The CSI Program has compiled a list of eligible contractors who have completed projects for an incentive, although any eligible, licensed solar contractor may work on your project. You can research contractors by ZIP code to see how many projects they have completed in your area and filter results by the average cost per Watt to learn how much money average customers are paying.

[www.californiasolarstatistics.com/search/contractor](http://www.californiasolarstatistics.com/search/contractor)

**Ask for references:** Talk with friends and neighbors who have already installed solar, request references from contractors’ previous customers and review past installations to ensure the costs were reasonable, the customers satisfied and the systems are performing properly.

### What to Expect from Contractors

Just as you would do for any other type of home improvement, you should obtain bids from at least three solar contractors to ensure you receive the most competitive and comprehensive bid.

Solar contractors typically provide free site evaluations, comprehensive quotes and payback information. Your contractor should analyze your past energy consumption and costs, as well as your future energy needs and desired offset, to help you determine the appropriate size system.

A qualified solar contractor also will evaluate factors that will affect the performance of your PV system, such as the roof size, orientation (tilt and direction) of the system, shading and other factors.

In addition, the solar contractor should be able to develop a financial plan for you. You will want to evaluate all of your options to determine if a purchase, lease or PPA works best for you.

### 3. The Installation Process

The table at the right outlines a typical solar installation process. Some steps can take place simultaneously and your contractor will probably take care of most of them.

Your project will need a building or electrical permit from the city or county building and safety department before you can legally begin installation. After obtaining the required permits, a typical residential installation can be completed in as little as one to three days. Typically, at least two installers work on site during an installation, but several more may be required depending on the size and scope of your individual project.

Once your system is installed, the city or county will inspect it. After your new system passes this initial inspection, your local utility may also inspect the system to ensure it is interconnected properly and meets all safety requirements. Further, the CSI Program Administrator for your utility service territory may choose to inspect the system as part of its quality control program. Be sure not to turn your system on until you receive official permission to operate from your utility.

#### Did You Know?

▶ The CSI Program allows self-installation of solar generation systems for those with the technical knowledge to do so. Self-installers may apply for CSI rebates; however, they will be responsible for submitting the program, interconnection and NEM applications to the appropriate Program Administrator. Visit your Program Administrator's website for an overview of the application process.

Typical Solar Installation Steps		Role
1	Research contractors and compare bids*	Customer
2	Design system (site visit and usage evaluation to determine size)	Contractor
3	Sign contract**	Customer
4	Apply for CSI incentive; submit reservation application***	Contractor
5	Apply for interconnection and net metering; submit application(s) to your utility	Contractor
6	Apply for building permit with appropriate city or county agency	Contractor
7	Install the solar PV system	Contractor
8	City/county onsite system inspection; submit approval to utility	Contractor
9	Utility onsite interconnection/meter inspection	Utility
10	Turn system on upon written approval from utility	Customer
11	Submit CSI incentive claim application	Contractor
12	CSI system inspection, if needed	Utility/PA
13	CSI incentive payment to designated payee***	Utility/PA
14	Receive first utility bill post-installation under Net Energy Metering	Customer

\*Obtain HOA approval, as needed, upon receipt of bids and prior to signing the contract.

\*\*Discuss and clarify roles with your contractor before finalizing the contract to ensure you understand who is responsible for each step in the process.

\*\*\*Incentives through the CSI program may not be available in your area; please check with your contractor or local program administrator to determine available funding.

There are two types of incentives available to customers through the California Solar Initiative Program . . .

## HOW YOUR CALIFORNIA SOLAR INITIATIVE REBATE IS CALCULATED

The California Solar Initiative Program is structured so that incentive payments decline as the market grows. Therefore, the incentive step levels decline as more applicants apply for the program.\*

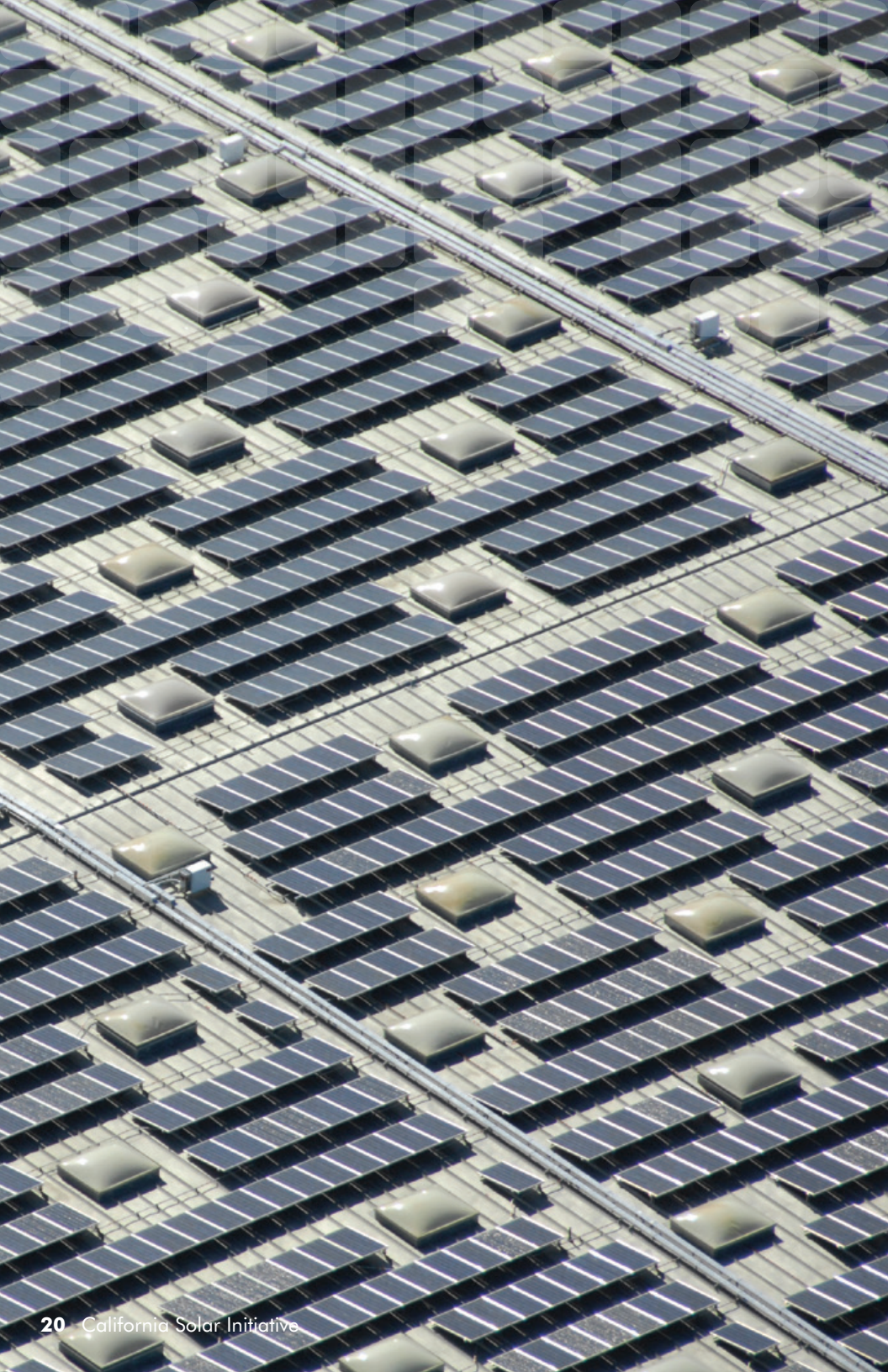
Two types of incentives are available to customers through the CSI Program: the Expected Performance-Based Buydown (EPBB) and the Performance-Based Incentive (PBI). The EPBB and PBI payments are intended to be financially equivalent.

<b>Expected Performance-Based Buydown (EPBB)</b> <i>(Paid in \$/W)</i>	<b>Performance-Based Incentive (PBI)</b> <i>(Paid in \$/kWh)</i>
Intended for residential and small business customers	Intended for large commercial, government and nonprofits
Mandatory for all systems smaller than 10kW	Mandatory for all systems larger than 30kW
The rebate is a one-time, lump-sum, up-front payment based on your system's expected future performance	The rebate is paid over 60 months (five years) and is based on the actual metered energy produced by your solar generation system in kWh

If your system is smaller than 30 kW and you would like to calculate the amount of the EPBB rebate for your system, ask your contractor for a copy of the CSI EPBB Calculator results. The calculator will use specific design and performance characteristics of your location and the system to determine your CSI system rating, which you can then multiply by your currently applicable incentive level ([www.csi-trigger.com](http://www.csi-trigger.com)).

If you would like a personalized estimate of the cost and benefits of investing in a solar PV electric system, visit the Go Solar, California "Solar Calculators" page to help you make a decision. ([www.gosolarcalifornia.ca.gov/tools/calculators](http://www.gosolarcalifornia.ca.gov/tools/calculators)).

\*Check with your local Program Administrator to see if CSI incentives are still available.



# GLOSSARY OF COMMONLY USED TERMS

---

*(Refer to the California Solar Initiative Program Handbook for more details.)*

## **Alternating Current or AC**

AC is the form of electricity that is delivered to your home or business by an electric utility. Solar PV systems produce DC, which must be converted to AC by an inverter.

## **Array**

Any number of electrically connected PV panels providing a single electrical output.

## **Capacity Rating**

The rating given to a PV system by its manufacturer denoting the load the system is able to meet or supply when operating at full capacity in direct sunlight with no shade.

## **CEC-AC Rating**

The calculation that provides a total estimated energy output of a solar generation system, factoring in the efficiency of the panels and inverter. The CSI Program Administrators use the California Energy Commission's CEC-AC method to measure nominal output power of PV cells or modules to determine the system's rating in order to calculate the appropriate incentive level (number of modules multiplied by the module Performance Test Conditions rating multiplied by the inverter efficiency).

## **Conversion Efficiency**

The amount of the sun's energy that a solar cell can convert into electricity; the balance is lost as heat or reflected light.

## **Design Factor**

The design factor is a CSI term that compares a proposed system's expected generation output with that of a baseline system. The design factor allows the CSI Program Administrators to pay a higher incentive to optimally designed systems. The design factor is calculated using a few key inputs in the EPBB Calculator available at [www.csi-epbb.com](http://www.csi-epbb.com).

## **Direct Current or DC**

Solar PV systems produce electricity in DC, which is defined as the continuous flow of electricity through a conductor. DC power is converted to AC by an inverter to power homes and businesses.

### **Greenhouse Gas or GHG**

The gases responsible for trapping heat from the sun within Earth's atmosphere (i.e., water vapor, carbon dioxide, methane, ozone, chlorofluorocarbons and nitrogen oxides). GHGs are released from many sources, including industrial processes such as power generation from fossil fuels.

### **Grid**

A network of power stations, transmission circuits and substations that conduct electricity and provide it to homes and businesses for their use.

### **Grid-Connected or Grid-Tied PV System**

A PV system in which the PV array is wired into buildings or residences that are connected to the utility grid. This allows customers to feed excess electricity into and pull needed electricity from the grid. To receive rebates from the CSI Program, PV systems must be connected to the utility's grid.

### **Interconnection Agreement**

A legal document between the customer and their electric utility authorizing the connection of the customer's solar generation system to the utility's grid. This agreement is required prior to your utility granting permission to operate and your PA paying the CSI rebate.

### **Inverter**

A device that converts DC electricity produced by a solar generation system into AC electricity that can be used in a home or business. Some energy is lost when this conversion takes place (see CEC-AC rating).

### **Inverter Efficiency**

The AC power output of the inverter divided by the DC power input. Inverter efficiency is lowest when operating at low loads; thus, it is important to select inverters of the proper size relative to the PV array.

### **Kilowatt or kW**

A unit of electrical power equal to 1,000 W, which constitutes the basic unit of electrical demand. The Watt is a metric measurement of power (not energy) and is the rate (not the duration) at which electricity is used. 1,000 kW is equal to one megawatt (MW).

### **Kilowatt-Hour or kWh**

A unit of electrical energy, equivalent to the use of one kW of electricity for one full hour. Utilities measure customers' electric energy usage based on kWh, and electricity rates are most commonly expressed in cents per kWh. The CSI Program's PBI incentive is paid based on the kWh of energy produced by a solar generation system.

### **Load**

The amount of power consumed by an electric customer at a specific time. Base load is the minimum constant level of electricity required by utility customers; peak load is the amount of electricity required at the time of greatest demand.

### **Megawatt or MW**

Unit of electric power equal to 1,000 kW or 1 million Watts.

### **Meter**

A device used to measure and record the amount of electricity used and/or generated by a consumer.

### **Modules**

A module is the smallest protected assembly of interconnected PV cells. Modules are rated typically from 40 to 300 Watts.

### **Orientation**

A term used to describe the direction that a solar module faces. The two components of orientation are the tilt angle (the angle of inclination a module makes from the horizontal) and the azimuth (the compass angle that the module faces, with north equal to 0 degrees and south equal to 180 degrees).

### **Photovoltaic or PV**

The technology that uses a semiconductor (such as silicon) to convert sunlight directly into electricity.

### **Program Administrator or PA**

Refers to PG&E, SCE and CCSE, who administer the CSI Program under the auspices of the California Public Utilities Commission (CPUC), in the service territories of IOUs. CCSE administers the CSI Program in the SDG&E service territory.

### **Renewable Energy Credits or RECs**

Also known as green certificates, green tags or tradable renewable certificates, RECs represent the environmental attributes of the power produced from renewable energy projects. By installing a renewable energy system (such as solar), you become the owner of these environmental attributes, or RECs.

### **System Size**

System size is the electricity generating capacity of a given photovoltaic system based on CEC-AC rating standards. In the CSI Program, the system size is limited to no greater than the amount of total electricity consumed at a site during the prior 12 months.

### Time-of-Use or TOU Rates

An electricity pricing plan in which the cost of electricity varies depending on the time period in which the energy is consumed or produced. In a TOU rate structure, higher prices are charged during utility peak-load times. Such rates can provide an incentive for consumers to curb power use during peak times. Solar PV panels tend to produce power during peak times, so they have higher value when used in conjunction with TOU rates.

### Tracker or Tracking Array

A number of PV modules mounted such that they track the movement of the sun across the sky to maximize energy production, either with a single-axis or dual-axis mechanism.

### Watt or W

A unit of measurement of electric power, named after physics pioneer James Watt.

## HOW TO CONTACT THE PROGRAM ADMINISTRATORS

---



### California Center for Sustainable Energy

*(Program Administrator within SDG&E territory)*

9325 Sky Park Court, Ste. 100  
San Diego, CA 92123

Email: [csi@energycenter.org](mailto:csi@energycenter.org)

Phone: 858-244-1177

Fax: 858-244-1178

[www.gosolar.energycenter.org](http://www.gosolar.energycenter.org)



### Southern California Edison

Attn: California Solar Initiative Program Administrator

P.O. Box 800

Rosemead, CA 91770

Email: [CSIGroup@sce.com](mailto:CSIGroup@sce.com)

Phone (general): 800-799-4177

Phone (technical): 866-584-7436

[www.sce.com/gosolar](http://www.sce.com/gosolar)



[www.gosolarcalifornia.ca.gov](http://www.gosolarcalifornia.ca.gov)



[www.cpuc.ca.gov](http://www.cpuc.ca.gov)

“California’s 1,600 megawatts of rooftop solar allow customers to generate clean, renewable electricity where it’s needed, helping meet our greenhouse gas reduction and renewable energy goals while protecting California’s remaining wild lands.”

— Michael R. Peevey, President  
California Public Utilities Commission

## HOW TO MAKE SMART CHOICES WHEN GOING SOLAR

---

Qualified contractors are your key to getting the most productive solar generation system for your home or business, which is why Go Solar, California joins with the Contractors State License Board (CSLB) in advising Californians to be smart shoppers when selecting a solar contractor and comparing bids.

Because a solar energy system may not qualify for rebates if the process is not followed correctly, here are some guidelines to help ensure that you select a qualified, licensed solar contractor:

1. **Start by visiting [www.GoSolarCalifornia.ca.gov](http://www.GoSolarCalifornia.ca.gov)** for a list of licensed solar contractors. Read about how to hire a contractor — such as checking references, obtaining detailed information in writing about all materials to be used, and confirming the contractor’s classification — in the Resources section.
2. **Verify that the contractor has an active A, B, C-10 or C-46 license** (or C-36 for solar water heating installations) through the CSLB at [www.cslb.ca.gov](http://www.cslb.ca.gov) or by calling 800-321-2752.  
  
Ask the contractor to show his/her CSLB “pocket license” to make sure you’re meeting with an authorized person and a photo ID to confirm identification.
3. **You should interview at least three solar contractors** and compare their bids — including the amount of electricity the system will produce and the net cost of the system per Watt — before hiring. Take caution against automatically selecting the contractor with the lowest bid, which may be a red flag that the contractor is cutting corners. Also be on the watch for unusually high bids. You can obtain detailed information from the California Solar Initiative about average project costs at [www.GoSolarCalifornia.ca.gov](http://www.GoSolarCalifornia.ca.gov) to see if your bids are within the average range.
4. **Read the fine print!** Make sure you fully understand everything contained within the contract — including warranties and maintenance agreements — **before** signing a contract.
5. **Finally, under California state law**, you should **never** pay more than \$1,000 or 10% of the contract price (whichever is less) for a down payment.

ITEM		BID #1	BID #2	BID #3
<b>Contractor Information</b>	<input type="checkbox"/> Company/Rep Name			
	<input type="checkbox"/> Company Phone #			
	<input type="checkbox"/> CSLB License #			
<b>System Description</b>	<input type="checkbox"/> Check Status at <a href="http://www.cslb.ca.gov">www.cslb.ca.gov</a>			
	<input type="checkbox"/> System Nameplate Rating (DC kW)			
	<input type="checkbox"/> System Size in CEC-AC kW			
	<input type="checkbox"/> % of Electric Load Offset			
	<input type="checkbox"/> Base System Cost			
<b>System Cost</b>	<input type="checkbox"/> Adders			
	<input type="checkbox"/> Estimated Permit Fees			
	<input type="checkbox"/> (Less) Estimated CSI Rebate			
	<input type="checkbox"/> Total Cost			
	<input type="checkbox"/> Cost Per Watt Total Cost / (System Size kW x 1,000)			
<b>Project Value</b>	<input type="checkbox"/> Down Payment			
	<input type="checkbox"/> Year One Expected Savings			
<b>Other Factors</b>	<input type="checkbox"/> # Years for Payback			
	<input type="checkbox"/> Contractor Financing Options (if applicable)			
	<input type="checkbox"/> Warranty Terms			

## ONLINE RESOURCES

### General CSI-Related Websites

[www.csi-trigger.com](http://www.csi-trigger.com) – CSI Statewide Trigger Point Tracker

[www.gosolarcalifornia.ca.gov](http://www.gosolarcalifornia.ca.gov) – CPUC and CEC Website

[www.californiasolarstatistics.com](http://www.californiasolarstatistics.com) – CSI Program Data

### Solar Contractor Research Websites

[www.cslb.ca.gov](http://www.cslb.ca.gov) – Contractor State License Board

[www.californiasolarstatistics.com/search/contractor](http://www.californiasolarstatistics.com/search/contractor) – California Solar Statistics Contractor Database

[www.gosolarcalifornia.ca.gov/database/search-new.php](http://www.gosolarcalifornia.ca.gov/database/search-new.php) – Go Solar California Contractor Database

[www.gosolarcalifornia.com/links/equipment\\_links.php](http://www.gosolarcalifornia.com/links/equipment_links.php) – CSI Program-Approved Equipment List





*The CSI and CSI-Thermal Programs are funded by California investor-owned utility customers and are administered by regional Program Administrators under the auspices of the California Public Utilities Commission.*

© 2013 California Center for Sustainable Energy and Southern California Edison. Copyright and trademarks belong to their respective owners. All rights reserved.

 Printed on recycled paper.  Printed with soy-based ink.